



***World Class Cleaning & Hygiene Solutions™***

## Product Catalogue

**National Chemical Laboratories, Inc.**

401 North 10th Street • Philadelphia, PA 19123

1-800-NAT-CHEM • (215) 922-1200 • Fax: (215) 922-5517

www.nclonline.com • E-mail: info@nclonline.com



*aerosols  
automotive  
bio-enzymes  
carpet care  
cleaners  
degreasers  
deodorants  
disinfectants  
dispensing systems  
environmentally responsible  
floor care  
food service  
glass cleaners  
hand care  
industrial care  
malodor control  
restroom care  
stone care solutions  
training  
warewashing  
wood care*

Photograph of NCL Fonder Alfred Pollack circa 1955

***Over 60 Years of Experience, Proud Second Generation, Family Owned & Operated***



**World Class Cleaning & Hygiene Solutions™**

### *Our focus is on your cleaning needs!*

At NCL®, we solve problems for sanitary maintenance professionals and the facilities that you maintain with innovative, cost-effective products and programs. Products like Bare Bones® Liquifying Stripper, that has set the standard for stripping performance for nearly 30 years, and 24/7® Extended Performance Floor Finish which has revolutionized floor care. Programs like the On The Mark™ Healthy Green Cleaning for Education and Building Service Contractors, which establishes a web-based Quality Assurance Management platform to better clean schools and other facilities.

We are proud of our over 60-year tradition as a leader in the sanitary maintenance industry. NCL® led the way with sustainable, environmentally responsible cleaning systems long before they became popular in the marketplace. Today, we partner with third party organizations such as Green Seal™, the U.S. Green Building Council and the Healthy Schools Campaign to encourage the use of procedures and products that reduce potential environmental and health hazards from cleaning. Through our intensive training programs, available both at our 8300 Sq. Ft. Training Center in Philadelphia, PA and online (NCL® University Online), we keep pace with our rapidly changing industry. In addition, our team of factory trained regional sales representatives lend assistance with local seminars, and hands-on procedures training on the correct techniques for using NCL® products. From restrooms to classrooms, industrial plants or healthcare, NCL® has the expertise to help you make cleaning your facility easier and on budget.

With over 270 unique products in 20 separate categories, NCL® products can provide a world of solutions for your facility.

*visit us on the web at [www.nclonline.com](http://www.nclonline.com)*



*Early photo of NCL® Founder Alfred Pollack loading a tank truck for shipment.*



*State-of-the-Art packaging equipment with extensive production capabilities assures pinpoint packaging quality control and continuous order fulfillment.*

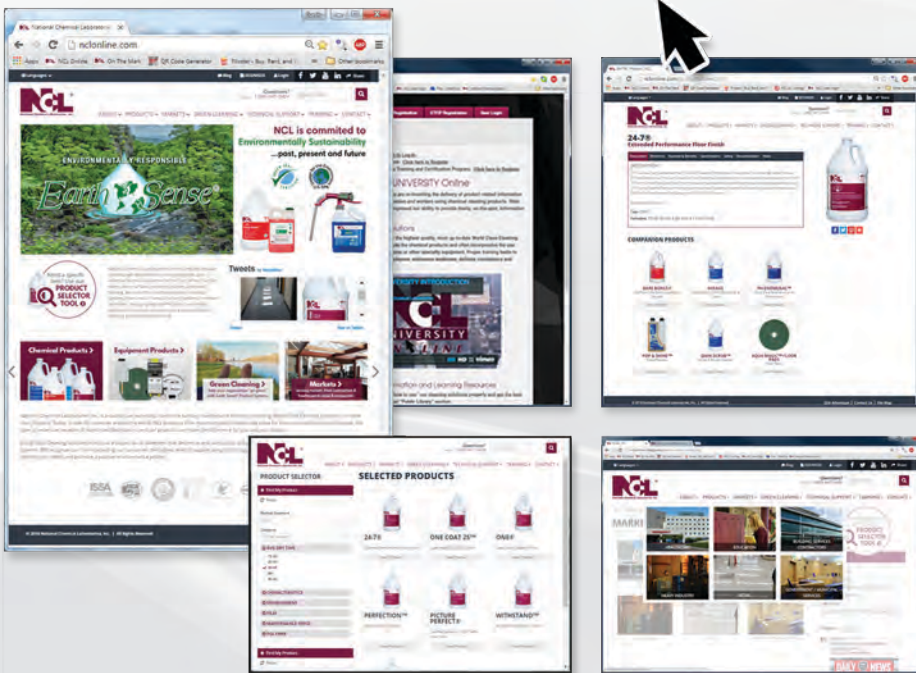


*Today, the NCL® Training Center in Philadelphia is a symbol of our commitment to training and support of our World Class Cleaning Solutions®.*

We fully support social media to provide easy access for current, useful product information and tips.



Scan the QR Code to download our NCL app.



Proud Members of:



NCL participates in and supports the efforts of many local organizations for the cleaning industry throughout the United States.



# TABLE OF CONTENTS

## Floor Care Solutions™ (pages 2 - 5)

|                               |                              |
|-------------------------------|------------------------------|
| Floor Finishes                | Floor Cleaners & Maintainers |
| Floor Sealers                 | Dust Mop Treatments          |
| Floor Strippers               | Rubber Floor Care            |
| Static Dissipative Floor Care | Specialty Cleaners           |
| Floor Restorers               |                              |

## Stone Care Solutions™ (pages 6 - 9)

|                     |                                  |
|---------------------|----------------------------------|
| Marble Care         | Stone Coating                    |
| Terrazzo Care       | Specialty Cleaning & Maintenance |
| Granite Care        | Porcelain / Ceramic Tile Care    |
| Routine Maintenance | Stone Care Floor Pads            |
| Stone Protection    | Stone Care Equipment             |

## Coaches' Select™ Sports Floor Program (page 10)

|               |                             |
|---------------|-----------------------------|
| Wood Finishes | Prep Pads                   |
| Wood Cleaners | Wood Floor Care Accessories |

## Earth Sense® Green Cleaning Solutions (pages 11 & 12)

|                      |                                |            |
|----------------------|--------------------------------|------------|
| All Purpose Cleaners | Degreaser Cleaners             | Floor Care |
| Washroom Cleaners    | Glass & Multi-Surface Cleaners | Hand Care  |

## DUAL-BLEND® Chemical Management System (pages 13 - 15)

|  |                        |                     |
|--|------------------------|---------------------|
| Glass & Multi-Surface Degreaser / Cleaners | Restroom Disinfectants | Deodorant Equipment |
|--|------------------------|---------------------|

## Twin Power™ Chemical Management Solutions (pages 16 & 17)

|                        |                    |                                |
|------------------------|--------------------|--------------------------------|
| Restroom Disinfectants | Floor Care Carpets | Degreaser / Cleaners Equipment |
| Glass & Multi-Surface  |                    |                                |

## Ready Set... Clean!® Portable Dilution System (pages 18 & 19)

|                        |                       |                                |
|------------------------|-----------------------|--------------------------------|
| Restroom Disinfectants | Floor Cleaners        | Degreaser / Cleaners Equipment |
|                        | Glass & Multi-Surface |                                |

## Carpet Care Solutions™ (page 20 & 21)

|                                    |                          |
|------------------------------------|--------------------------|
| Encapsulating Carpet Care Cleaners | Spot Removers Treatments |
| Heavy Duty Cleaners                |                          |

## Main Squeeze™ Concentrate (page 22)

|                                  |                          |
|----------------------------------|--------------------------|
| Glass & Hard Surface Concentrate | All-Purpose Concentrate  |
| Degreaser Concentrate            | Disinfectant Concentrate |

## World Class Cleaning Solutions® (pages 23 - 25)

|                                    |                             |
|------------------------------------|-----------------------------|
| General Purpose Degreaser Cleaners | RTU Multi-Surface Cleaners  |
| Ready-To-Use Degreaser Cleaners    | Glass Cleaners              |
| Specialty Products                 | Ready-To-Use Glass Cleaners |
| General Purpose Cleaners           | Polishes                    |
| Multi-Surface Cleaners             |                             |

## Disinfectant Solutions™ (pages 26 - 27)

|                                    |                            |
|------------------------------------|----------------------------|
| Disinfectant Concentrates          | Disinfectants Ready-To-Use |
| Phenolic Disinfectant Concentrates | Acid Bowl Cleaners         |

## NCLwipes™ (page 27)

NCLwipes™ - Disinfectant Wipes

## Hand Care Solutions™ (pages 28 - 31)

|  |                                       |
|--|---------------------------------------|
| afia™ Skin Care Solutions                  | Anti-Microbial Hand Cleaners          |
| Foaming Hand Cleaners                      | Unison Hand Cleaners                  |
| Sanitizing Foaming Hands Cleaners          | Hand Cleaner Dispensers & Accessories |
| Natural, Coconut Oil Based Hand Cleaners   |                                       |
| Synthetic, Mild, Lotionized Hands Cleaners |                                       |

## Restroom Care Solutions™ (pages 32 - 34)

|                        |                          |
|------------------------|--------------------------|
| Non-Acid Bowl Cleaners | Deodorants               |
| Specialty Cleaners     | Citrus Based Deodorants  |
| Shower Cleaners        | Bio-Enzymatic Deodorants |
| Crema Cleaners         | Bio-Enzymatic Cleaners   |
| Restroom Deodorants    |                          |

## Bio-Enzymatic Care Solutions™ (page 35)

|                        |                         |
|------------------------|-------------------------|
| Bio-Enzymatic Products | Bio-Enzymatic Equipment |
|------------------------|-------------------------|

## ProLEX™ (page 36)

|  |                                    |
|--|------------------------------------|
| Machine Dishwashing - High Temperature | Manual Dishwash Liquid & Sanitizer |
| Machine Dishwashing - Low Temperature  | Bio-Enzymatic Products             |
| Specialty Warewashing Products         |                                    |

## Food Service Solutions™ (pages 37 & 38)

|                                    |                       |
|------------------------------------|-----------------------|
| CleanSMART™ Products               | Dish Detergents       |
| CleanSMART™ Equipment              | Foaming Degreasers    |
| Food Service Equipment Accessories | Food Service Cleaners |
| Sanitizers                         |                       |

## World Class Cleaning Solutions® (pages 39 - 41)

|                     |                                 |
|---------------------|---------------------------------|
| Aerosols            | Automotive Products             |
| Industrial Products | Uni-Power™ Dispensing Equipment |

For individual product package sizes available, refer to [www.nclonline.com](http://www.nclonline.com)

### Logo Certification Key:



These products meet Green Seal™ Standard GS-37, GS-40, or GS-41A, as appropriate, based on effective performance, recyclable or minimized packaging, and protective limits on VOCs and human & environmental toxicity. [GreenSeal.org](http://GreenSeal.org).



The EARTH SENSE® Seal of Assurance is self-certified by NCL, and identifies our products that are formulated to promote human health and worker safety with a preferred environmental profile.



The mission of the US Environmental Protection Agency (EPA) is to protect human health and the environment. EPA requires registration for pesticides and disinfectants for sale in the United States. Products with this symbol are registered with the EPA for sale in the US.



Underwriters Laboratories (UL) is a widely recognized, independent, third party certifier for product performance. Products with this symbol have been evaluated and certified to meet specific safety requirements.



The Maple Flooring Manufacturers Association (MFMA) is the authoritative source of technical and general information about maple flooring and related sports flooring systems. Products with this symbol have been certified by MFMA according to established standards.

## Floor Finishes

24/7® 

### Extended Performance Floor Finish (#0593)

The exclusive micro molecular technology extends floor stripping cycles from 18 to 36 months, without sacrificing performance and appearance. 24/7® applies easily with a deep gloss and performs well in high traffic environments.

One® 

### Labor Saving Sealer / Finish (#0590)

>34.5% Total Solids. Exclusive MPS77 polymer technology. This extraordinary sealer / finish combination with an ultra-hard shell produces a maximum gloss that responds well to UHS burnishing. Lower labor costs by using fewer coats.

One Coat 25™ 

### Super Hi-Gloss Floor Finish (#0510)

The hard and durable film of One Coat 25™ looks great, but looks aren't everything. This finish is also tough enough for the roughest environments. Multi-speed buffable or UHS burnish. One Coat 25™ outshines the competition.

World Class™ 

### Ultra High Speed Sealer/Finish (#0570)

A sealer / finish designed to respond exceptionally well to high speed burnishing. World Class™ dries fast with a rich, wet-look gloss. Excellent in high traffic situations.

Withstand™ 

### Non-Buff Floor Sealer / Finish (#0591)

No buffing machines? No problem! Withstand™ sealer / finish produces a durable wet look gloss with fewer coats right off the mop! Reduces maintenance costs.

Invincible™ 

### Mega Wear, Low Odor Floor Finish (#0595)

Easy to apply with a great "off the mop" gloss. Excellent for use in humid environments. Invincible™ holds up to the toughest wear, resisting scuffs, scratches, and abrasions. All this plus a low odor formulation.

Picture Perfect® 

### Low Maintenance / High Traffic Floor Finish (#0580)

The perfect solution for facilities looking to reduce labor costs, without sacrificing performance or appearance. This sealer / finish combination product dries fast and reduces application labor hours, producing a brilliant shine in high traffic environments.

Perfection™ 

### Advanced Floor Coating (#0512)

This advanced floor coating dries fast, leaving an instant wet look shine. Designed for moderate to high traffic areas. Achieves maximum gloss with multi-speed or high-speed buffing.

Balance™ 

### UHS Sealer / Finish (#0573)

Incredible, premium grade, "Shiny" polymer technology. This sealer / finish responds to all speeds of buffing equipment, and UHS burnishing. Balance™ provides long lasting performance and durability.

Impressions™ 

### Brilliant Gloss / Ultra Wear Floor Finish (#0550)

Impressions™ applies easily, dries fast, and produces a brilliant wet-look shine. Multi-speed buffable for a tremendous, durable shine.

Visions™ 

### Wet Look Floor Finish (#0502)

Economical and easy to apply, dries quickly, leaving a long lasting wet-look shine. Multi-Speed buffable with excellent results.

Brite Eyes® 

### Wet Look Premium Grade Floor Finish (#0521)

Designed for moderate to high traffic environments, Brite Eyes™ applies easily, dries fast, and produces a wet-look shine.



World Class Cleaning & Hygiene Solutions™

## Floor Care Solutions™

National Chemical Laboratories is a leader in floor care technology. Our technical staff has developed cutting-edge formulations designed to produce superior performance finishes, sealers, buffing compounds, dust mop treatments and floor polish pads that save time, labor and maintenance costs.

Matte™

### Satin Gloss Floor Finish (#0585)

Satin gloss appearance is recommended for assisted living / nursing centers, especially those that focus on Alzheimer's patients. Extremely durable finish reduces maintenance and wears exceptionally well. Self sealing / Does not require the use of a separate sealer. Designed for ease of application.

Aspire™ 

### Metal-Free Sealer / Finish (#0555)

Metal-free, environmentally responsible, high performance floor finish/sealer. This low odor formulation produces an initial wet-look gloss and responds very well to any speed buffing or burnishing. Green Seal™ Certified GS-40

Evergreen™ Finish 

### Super-Durable Green Sealer Finish (#0508)

Go green with this environmentally responsible floor finish. Evergreen™ Finish is more durable and produces a greater shine than one would normally expect from a "green" finish. Green Seal™ Certified GS-40

## Floor Sealers

Stamina™ 

### Indoor/Outdoor Surface Coating (#0524)

Water-based surface coating provides exemplary stain resistance to surfaces both indoors and outdoors. Easy to apply, UV resistant will not darken.

Pro-Seel™

### Water Emulsion Hard Surface Sealer (#0525)

This water emulsion hard surface sealer produces chemical resistance with tremendous durability. Use on concrete, stone, terrazzo, brick, quarry tile, and other mineral based surfaces.

Decade™

### Semi-Permanent / Stain Resistant Water Based Sealer (#0523)

Water-based, stain resistant, semi-permanent sealer for use on resilient tile, terrazzo, honed marble, and quarry tile floors.

Enseel™

### Acrylic Sealer & Undercoater (#0504)

This economical acrylic sealer is an ideal base coat for all types of floor finishes. Works well on all resilient and hard surface floors.



## Floor Strippers

### Bare Bones®

#### No-Rinse / No-Scrub Liquifying Stripper (#1058)

The legend continues! A no-rinse, no-scrub, liquifying floor stripper that revolutionized the floor maintenance industry and is not slowing down any time soon. The powerful 55% active formula quickly attacks even the toughest, burnished finishes for easy removal.

### Bolt™

#### Ultra Concentrated No-Rinse Speed Stripper (#1069)

This ultra-concentrated formula is highly dilutable for economical stripping performance. Applications remain wet longer thanks to the superb wetting system, allowing work on a larger area for a longer time, reducing labor. No flood rinsing or neutralization required, saving you additional labor costs. Convenient quart package makes 4 gallons of stripping solution.

### Bare Bones® Low Odor

#### Low Odor All Purpose Speed Stripper (#1051)

How can anyone improve on Bare Bones®? Produce an equally strong product, but in a low odor formula. That's how! Unique wetting system stays wet longer, reducing labor costs.

### ZooOOM™

#### All Green Speed Stripper (#1065)

An environmentally responsible, mild pH speed stripper that removes even heavily burnished finishes without the harsh "floor stripper odor". The non-butyl G-10™ wetting technology stays wet longer, reduces dry-back problems and saves labor costs.

### Green Impact™

#### Speed Stripper (#1053)

Green Impact is the ultimate in Eco-friendly floor stripping. Low odor formulation does not contain butyl, phosphates, free alkali, NPE / APE surfactants, or added fragrances. Green Seal™ Certified GS-40

### Super-Sonic™

#### Intensive Speed Stripper (#1054)

This intensive stripper works with speed and power to remove all types of polymer floor finishes. Super Sonic™ stays wet longer, but rinses easily. Unique low foaming formula works well in automatic scrubbers.

### ASAP™

#### Fast Acting Stripper (#1062)

An economical fast acting stripper for use in all stripping applications. ASAP™ liquifies floor finish build-up with unbeatable speed! It may be used on vinyl tile and other resilient floors. ASAP™ is also ideal for terrazzo and many other non-resilient surfaces.

### Super Purge

#### Floor Finish Solubilizer (#1056)

No scrubbing machine is necessary with this powerful finish solubilizer. A highly concentrated product, Super Purge is economical, and works fast on the toughest stripping jobs.

### Expose™

#### Non-Ammoniated Stripper (#1050)

This versatile product can be used as a stripper or a cleaner, saving you time and money. Expose™ is a non-ammoniated, low odor formula.

### Pizzazz™

#### Soil and Floor Finish Build-up Remover (#2008)

Soil and floor finish build-up remover in a convenient aerosol form works great on baseboards, vertical surfaces, and as a spot stripper. Highly active, low odor formulation does not contain butyl or ammonia.



## Floor Restorers

**Vivid™** 

### Interactive Floor Finish Laminator & Maintainer (#0528)

Versatile multi-purpose formula, use as a spray buff, mop on restorer or with automatic scrubber. Moisturizes and repairs damaged coatings.

**Spit Shine™** 

### Ultra High Speed Kleen & Burnish (#0575)

Clean, polish, and harden floors in one quick and impressive burnishing step. Use as a mop on or through automatic scrubber.

**Pop & Shine™** 

### Gloss Restorer (#0545)

Apply as a spray buff, mop on restorer, or with an automatic scrubber. Any way you apply it, Pop & Shine™ cleans, restores, and protects even the most worn out floors, leaving them looking like they just received a fresh coating of finish.

**Pop & Shine™ RTU** 

### Gloss Restorer (#0546)

A ready to use spray buff, mop on restorer.

## Floor Cleaners & Maintainers

**Enhance™** 

### Neutral Floor Cleaner (#0935)

A rinse-free, pH neutral floor cleaner for everyday cleaning. Unique lemon deodorizing fragrance. Low foaming for use in mop/bucket or automatic scrubber.

**Mirage™**

### Floor Finish Maintainer & Cleaner (#0925)

Neutral cleaner and maintainer for modern floor care systems. Mirage™ leaves floors clean, conditioned, and smelling fresh with a unique Giane™ fragrance.

**Image™** 

### Deodorizing Neutral Cleaner (#0927)

A daily neutral cleaner with an excellent deodorizer. This higher foaming formula rinses easily and works well in hard water environments, with a Puri™ fragrance.

### Incrediloso™ Lavender

#### Multi-Purpose Cleaner / Deodorizer (#1427)

This versatile powerhouse defines the term multi-purpose. Clean floors, walls, countertops, or any water washable surface while also deodorizing in the same easy step. This Lavender fragrance formula is free rinsing and works well in hard water conditions.

### Incrediloso™ Herbal

#### Multi-Purpose Cleaner / Deodorizer (#1429)

This versatile powerhouse defines the term multi-purpose. Clean floors, walls, countertops, or any water washable surface while also deodorizing in the same easy step. This Herbal fragrance formula is free rinsing and works well in hard water conditions.

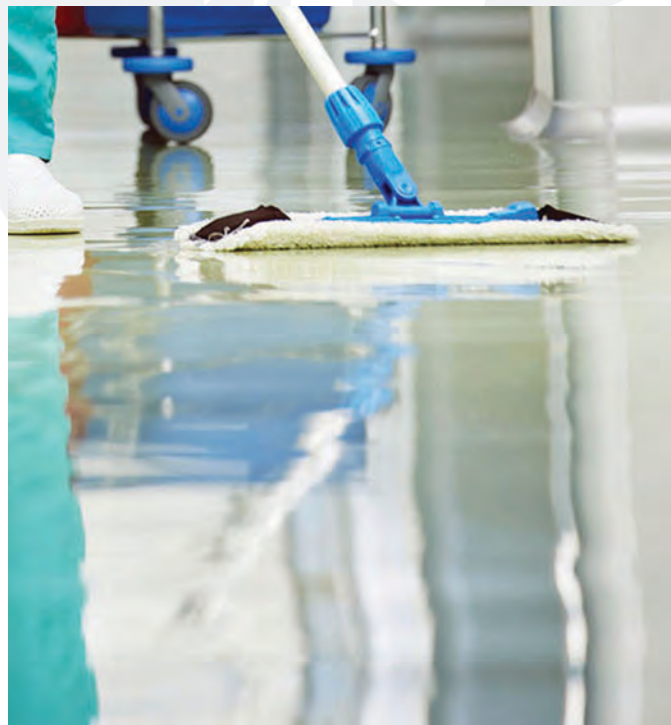
### Earth Sense® Neutral Floor Cleaner (#4048)

A superior daily cleaner for finished floors and other cleaning tasks. This pH neutral, film-free formulation is safe for use on all water washable surfaces.

### Earth Sense® Multi-Purpose

#### Neutral Cleaner (#4050)

High performance cleaning without caustics, acids, phosphates, solvents, or nonylphenol ethoxylate surfactants. This environmentally responsible and versatile cleaner can be used on floors and most other hard, water washable surfaces. Green Seal™ Certified GS-37 cleaner.





## Static Dissipative Floor Care

### No-Zap™ Static Dissipative Floor Coating (#2600)

No-Zap™ protects and shines on floors in environments sensitive to static electricity. Advanced polymer coating contains Zoran™ to control electrostatic discharge (ESD).

## Dust Mop Treatments

### Wac™ Wax-Based Floor & Mop Treatment (#0702)

Remove dust and dirt quickly from floors as it clings to a dust mop like a magnet using this wax-based floor and mop treatment.

### Treatco™ Oil Type Floor & Mop Treatment (#0701)

Remove dust and dirt quickly from floors as it clings to a dust mop like a magnet using this oil type floor and mop treatment.

### Control Dusting Cloth & Mop Treatment (#2013)

Water-based formula in a convenient aerosol to treat either a dust mop or a cleaning cloth. Control restores the natural shine to floors, furniture, and many other surfaces. Pleasant vanilla fragrance.

## Specialty Cleaners

### Qwik-Scrub™ Scrub & Re-Coat Cleaner (#0955)

Periodically deep clean and scrub with Qwik-Scrub™ prior to recoating with finish to extend the floor care life cycle. This formula can be applied with a mop or automatic scrubber, and is free rinsing.

### pH-Enomenal™

#### Floor Care Neutralizer and Conditioner (#0945)

Balance the floor's pH level following use of an alkaline stripper. Also works great at removing residue left behind by rock salt and other ice melt compounds.

## Rubber Floor Care

### Flexi-Clean Intensive Rubber Cleaner and Grease Remover (#2610)

Periodic intensive maintenance neutral cleaner for rubber surfaces, which will quickly emulsify greases and oils from standard and studded rubber floors.

### Flexi-Sheen Rubber Wax and Conditioner (#2612)

Use frequently to clean and protect those hard to maintain rubber surfaces. This high speed buffable conditioner will improve slip resistance and protect standard and studded rubber flooring surfaces.

## Luxury Vinyl Tile

### LVT-Protect™ Luxury Vinyl Tile Enhancer (#2622)

LVT-Protect™ creates a clear protective barrier adding a low, satin shine to reveal the character, color and beauty of the floor.

### LVT-Clean™ Routine Luxury Vinyl Tile Cleaner (#2620)

An advanced pH neutral, "ultra-wetting" formula for routine, safe, cleaning of luxury vinyl tile, linoleum, no-wax flooring and synthetic floors.





## Marble Care

### One Step™ Crystallizer Spray N' Buff (#2501)

Simple-to-use restoration system for marble, terrazzo and polished limestone floors. Produces a very high polish. The newly restored surface resists scuffs, scratches and will be very durable. One Step™ Crystallizer Spray N' Buff dries as you buff and therefore requires no messy clean-up. UL Classified.

### NCL-2™ Rapid Action Stone Crystallizer (#2529)

A new dimension in stone restoration. Developed as a simple-to-use restoration system for marble, terrazzo and polished limestone floors. Rapidly re-polishes worn marble, limestone and other calcium-containing natural surfaces. Easy-to-Use; just spray and buff surface to a dazzling polish. This newly restored surface will be very durable, resist scuffs and scratches. NCL-2™ dries as you buff and therefore requires no messy clean-up.

### MRP™ Marble Restoration Paste (#2522)

An advanced compound for all polished marble, limestone, and terrazzo. MRP™ easily removes light scratches from the surface and creates a true dazzling polish on even difficult-to-polish marble surfaces (such as green or black marble). MRP™ does not require the use of weighted marble equipment and in many cases reduces the need for costly diamond honing.

### Restore-It™ Marble Polishing Creme (#2502)

Restore-It™ is ready-to-use polishing cream that will re-polish worn marble, travertine, terrazzo, polished limestone and may also be used to polish concrete after honing. Water marks, etching from fruit juices and alcohol, as well as minor surface scratches can be removed while restoring a high degree of natural polish. Use Restore-It™ on floors as well as countertops and furniture. It contains no solvents and is VOC compliant.

## Terrazzo Care

### Rock Hard™ Step 1 - Stone Hardener (#2506)

Rock Hard™ is the first step of a synergistic two-step polishing and maintenance program for all types of terrazzo and natural stone. It hardens the surface of terrazzo, marble and granite. Then, with the use of Diamond Gloss™, an easy-to-maintain, super high gloss is produced on the surface. It is recommended for polishing terrazzo, hard marble surfaces (such as serpentine), and most types of granite. Continued use increases the density of the surface for more resistance to wear and staining.

### Diamond Gloss™ Step 2 - Stone Rejuvenator (#2523)

Diamond Gloss™ is the second step of a synergistic two step polishing and maintenance program for terrazzo and natural stone. It works to produce a super tough, super high gloss on terrazzo, marble and granite and which have been treated with Rock Hard™ Step 1. Terrazzo (both cementitious and resinous) will be improved with this process. Surface is ultra resistant to scratches and scuffs. It reduces long term labor costs. The surface is dramatically more resistant to wear and staining.

## Granite Care

### Shield Nano Molecular Coating & Enhancer (#2528)

Shield has been engineered by NCL's world class chemists specializing in surface care and surface protection. Shield uses advanced nano molecular materials and proprietary ingredients to produce a high gloss invisible protective coating. This product is used on granite, ceramic, porcelain and other hard surfaces to improve the slip resistance, prevent staining, removes scratches, enhance color, increase gloss and protect the surface.

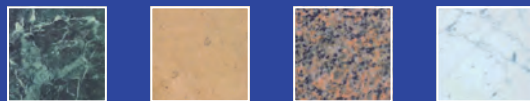
### Granite Star™ Crystallizer Spray N' Buff (#2525)

Granite Star™ Crystallizer Spray N' Buff is a breakthrough technology formulation that allows you to maintain polished granite surfaces as easily as spray buffing your floors. It brightens the color of any granite surface; Granite Star™ is even effective on black granite. Easy-to-use; just spray and buff. Saves a minimum of 40% in labor costs for granite polishing when compared with the use of diamonds.



World Class Cleaning & Hygiene Solutions™

## Stone Care Solutions™



Stone Care Solutions™ from NCL® is a complete, professional program for the restoration, protection and long term maintenance of natural stone and ceramic surfaces. This coordinated system allows you to maintain your natural floor surfaces, countertops, tables and other areas at peak polish levels, while protecting the surface from spills and staining.

## Routine Maintenance

### Patina™ Stone Cleaner / Conditioner (#2504)

Patina™ is an all natural, biodegradable, highly concentrated cleaner/conditioner designed for daily cleaning and conditioning of marble, granite, limestone, travertine, terrazzo, agglomerate, slate, unglazed ceramic, porcelain, terracotta, salttillo and concrete. Regular use provides a dirt repellent barrier, prevents hard water damage, brings out the natural color and brilliance of the stone, and improves slip resistance on polished surfaces.

### Stone Kleen™ Daily Neutral Stone Cleaner (#2503)

Stone Kleen™ is a highly concentrated neutral pH scrubbing cleaner designed specifically for daily use in automatic scrubbers. It is safe and effective on all stone surfaces: Marble, granite, limestone, onyx, terrazzo, travertine, flagstone, sandstone, slate, clay tile, salttillo tile, terracotta, quarry tile, cantera, ceramic tile, pavers, grout, agglomerate and masonry surfaces. It is also excellent for damp mopping on polished marble surfaces where frequent re-polishing by the crystallization method is performed.

### Hurricane™ Intensive Stone Cleaner (#2510)

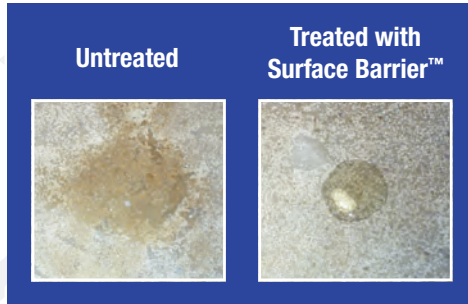
Hurricane™ Intensive Stone Cleaner is a high active, extra strength degreaser, cleaner and grout film remover that is safe for use on granite, marble, polished limestone, terrazzo, flagstone, clay tile, terracotta, quarry tile, cantera, ceramic tile, porcelain, slate, pavers, grout, concrete, and masonry. Effectively removes dirt deposits, grease accumulation, food stains and petroleum-borne soils without affecting the natural structure of the stone. Hurricane™ is intended for use as a periodic cleaner where heavy soiling is present, for construction job site clean-up and as an integral part of the Stone Care Solutions™ Maintenance System.



## Stone Protection

### Surface Barrier™ Water-Based Fluoropolymer Impregnator (#2500)

Surface Barrier™ is a "state-of-the-art" water-based fluoropolymer impregnator that penetrates deep into porous surfaces, creating a long lasting, invisible barrier that allows vapor transmission. Surface Barrier™ repels and protects against dirt, oil, food stains, grease, mold, mildew and waterborne soils. Surface Barrier™ can be used on all indoor and outdoor natural stone surfaces including: marble, granite, limestone, onyx, travertine, terrazzo, flagstone, sandstone, slate, clay tile, saltillo tile, terra cotta, quarry tile, cantera, unglazed ceramic tile, pavers, grout, concrete and masonry surfaces. Surface Barrier™ is ideal for indoor use on floors, kitchen countertops, showers, tubs, fireplaces, etc. Surface Barrier™ is also designed for outdoor use on stone surrounds, terraces, balustrades and swimming pool surrounds.



The stone surfaces above were affected by mineral seal oil. On the left (untreated side), the oil has left an immediate stain, while the oil on the right side (treated with Surface Barrier™) has "beaded-up" and can be removed easily without staining the stone.

## Stone Coating

### Dura-Gloss™ Multi-Speed Buffable Floor Coating (#2507)

Dura-Gloss™ utilizes an advanced polymer system to provide a brilliant gloss and protective coating on most natural polished stone surfaces. Dura-Gloss™ improves slip resistance on highly polished stone surfaces. This water-based high solids formula will produce a high initial gloss that can be maintained with any type of floor equipment, from conventional to UHS. Dura-Gloss™ levels easily and dries rapidly.

## Porcelain / Ceramic Tile Care

### Shield Nano Molecular Coating & Enhancer (#2528)

Shield has been engineered by NCL's world class chemists specializing in surface care and surface protection. Shield uses advanced nano molecular materials and proprietary ingredients to produce a high gloss invisible protective coating. This product is used on granite, ceramic, porcelain and other hard surfaces to improve the slip resistance, prevent staining, removes scratches, enhance color, increase gloss and protect the surface.





### Twister™ Mineral Deposit / Cement Film Remover (#2517)

Twister™ is a highly concentrated, fast acting, acid based cleaner for use on textured granite and other non-polished natural stones as well as unglazed ceramics. Twister™ removes grout and mortar residues, lime and hard water mineral deposits, efflorescence, surface rust and heavy construction dirt.

### Cyclone™ Intensive Ceramic Tile / Grout Cleaner (#2516)

A heavy duty alkaline cleaner for removal of ingrained dirt, oil, grease and wax on all ceramic tile, porcelain tile and grout surfaces. Cyclone™ is also a very effective grout cleaner for all polished and non-polished ceramic, porcelain and stone installations.

## Stone Identification Chart

| Surfaces   | Physical Characteristics  | Reactive To Acids | Hardness          |
|--|---|-------------------|-------------------|
|  <b>Marble</b>    | MARBLE<br>Available in many earth tone colors; always has a "vein-like" appearance. Low to moderate hardness. May have high polish or honed surface. Usually has 90° edges.   | Yes               | Soft to Moderate  |
|  <b>Limestone</b> | LIMESTONE<br>Available in many earth tone colors; may have a "fossil" appearance in pattern. Low to moderate hardness. May have high polish, honed or textured surface. Usually has 90° edges.                                  | Yes               | Soft to Moderate  |
|  <b>Granite</b>   | GRANITE<br>Available in many earth tone colors; obvious "grainy", crystalline structure in pattern. Very hard surface. May have high polish, honed or flame-cut surface. Usually has 90° edges.                                 | No                | Hard to Very Hard |
|  <b>Slate</b>     | SLATE<br>Monolithic look; common colors include black, green, burgundy and rust color. Usually soft material. Can be easy to scratch; Traffic patterns are mostly caused by dust, dirt, sand. Absorbent; can be easily stained. | Yes               | Soft              |
|  <b>Terrazzo</b>  | TERRAZZO<br>Made by mixing portland cement or resin matrix with marble, stone or glass chips. Extremely durable floor. Moderate to very hard surface. May have high polish, or honed surface.                                   | Yes               | Moderate to Hard  |
|  <b>Ceramic</b>   | CERAMIC<br>Man-made tiles (made from sand, silica and/or talc) that are fired to achieve superior hardness. Almost always glazed (matte or gloss appearance; non-porous). Edges are beveled (or rounded).                       | No                | Very Hard         |

## Specialty Cleaning & Maintenance

### Stone Beauty™ Countertop Polish (#2518)

Stone Beauty™ is a ready-to-use polish that restores and protects natural stone countertops. Stone Beauty™ is specifically formulated to be safe on stone surfaces such as granite, marble, limestone, travertine and other natural surfaces.

### Mold Away™ Mold & Mildew Remover (#2513)

Mold Away™ instantly removes mold and mildew stains from polished stone surfaces. Easy and safe to use on most polished stone, ceramic tile, porcelain and masonry surfaces. Designed for use in moist areas such as bathrooms and kitchens.



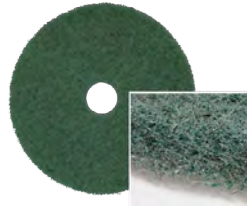


## Stone Care Floor Pads

### Aqua Magic™

#### Floor Pads (#2118, #2129)

A natural blend, dense floor pad suitable for use on natural stone surfaces. Designed for use with MRP, GRP, and Granite Sheen. Natural / Synthetic fiber blend creates a consistent, beautiful polish. Dense fiber construction promotes long pad life.



### Luminaire™

#### 3" Diamond Pads (#2305, #2306, #2307, #2308, #2309, #2310)

Premium performance diamond polishing discs for polishing stone surfaces. Exceptional quality and performance. Sold individually.



### Granite Master™

#### 3" Diamond Pads (#2329, #2330, #2331, #2332, #2333, #2334, #2335)

Premium performance diamond polishing discs for polishing granite surfaces. Exceptional quality and performance. Sold individually.

### Econo Diamonds™

#### 3" Diamond Pads (#2336, #2337, #2338, #2339, #2340)

Economical performance diamond polishing discs. Exceptional quality and performance. Sold individually.



### Wet Concrete Diamonds™

#### 3" Diamond Pads (#2321, #2322, #2323, #2324, #2325, #2326)

Premium performance diamond polishing discs for polishing concrete surfaces. Exceptional quality and performance. Sold individually.





## Stone Care Equipment

### Pro Series Stone Blazer™

#### Ultimate Duty Stone Restoration Machine (#2584, #2585)

Designed for the most discriminating Professional Stone Maintenance Worker. Ergonomically designed handle and Top-Lock Adjusting Handle simplifies the operation and reduces operator fatigue. Extra wide handle for comfort and ease of use. Extra heavy duty 4 gallon solution tank with positive shut-off valve. Heavy duty 1.5 HP enclosed motor. Rugged steel welded frame.

### Stone Blazer™

#### Ultimate Duty Stone Restoration Machine (#2530, #2549)

Heavy-duty, heavy weighted versatile machine for cleaning, crystallization, wet polishing or diamond grinding of marble, granite, limestone, concrete, terrazzo and other stone surfaces. Heavy-duty 1.5HP enclosed motor. Includes NAT-STONE™ Diamond Pad Driver and 2 ea. 25 lb U-weights. Durable steel welded frame for up to 220 lb capacity. 50' 14-3 2-part extra heavy duty power cord.

### Commercial Blazer™

#### 13" Commercial Restoration Machine (#2562)

Unique, smaller footprint gets into tight areas easily. Delivers the same weight per square inch as larger, heavier machines. 1.0 HP Twin Capacitor commercial motor. 50' 14-3 power cord. All steel assembly with welded frame. 26 lb Corrosion Resistant Weighted Diamond Driver included. 4 gallon solution tank.

### Nat-Weight™

#### Weighted Diamond Pad Driver (#2563)

A corrosion resistant, weighted diamond pad driver. Adds weight to machine to improve polishing performance. Available in 17" size to fit most commercial machines. Corrosion resistant for a long useful life. Full face Aplix® material provides superior holding power.

### Nat-Splash Guard™

#### High Density Plastic Guard (#2578, #2579)

Designed to contain splashing that results from polishing floors. Keeps surrounding areas cleaner to reduce clean up time. Available in 17" and 20" sizes to fit most machines. Installs easily, and can be removed easily for cleanup. High density plastic construction.

### Nat-Stone™

#### Diamond Pad Driver (#2532, #2556)

Replacement pad drivers designed for use with 17" and 20" STONE BLAZERS™. Features a plastic shower feed block with special driver. Heavy-duty construction for long lasting performance. Aplix® material provides superior holding power on diamonds or pads.

### Nat-Speed™

#### High Productivity Diamond Pad Driver (#2551)

Designed for use with STONE BLAZER™ equipment to increase productivity and diamond's ability to remove scratches from surfaces. Available in 17". Reduces labor cost up to 65%. Rugged steel construction. Counter rotating planetary heads increase productivity over 300%.

### Nat-Clean™

#### 13" Cleaning Brush w/Riser (#2554)

Designed for use with 13" COMMERCIAL BLAZER™. Aggressive cleaning brush for regular maintenance and cleaning. Ideal for uneven surfaces. Aggressive bristle action effectively cleans wide grout lines. Comes complete with high speed riser attached. For use on concrete and hard stone surfaces.

### Nat-Grit™

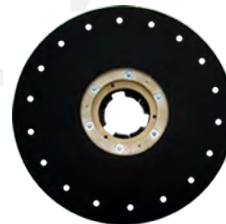
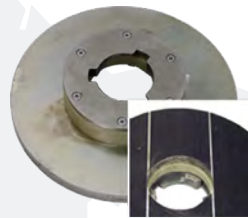
#### 15" Super HD Restoration Brush (#2531)

Designed for use with 17" STONE BLAZER™, this 15" brush is very aggressive for general scrubbing or stripping finishes from hard surfaces. Grit-containing bristles for fast cutting action. Ideal for uneven surfaces. For use on concrete and hard stone surfaces.

### Power Polish™

#### 17" Pad / Brush Combo (#2542)

17" medium duty brush / pad combination for frequent maintenance cleaning. Flexible bristles clean narrow grout lines and uneven surfaces. Pad stays in constant contact with the surface for deep polishing. Unique dual design cleans and polishes in one step.



## Wood Finish

### GymShield™ Ultra Premium

#### Water-Based Urethane-Acrylic Wood Finish (#1601)

Premium one-component wood finish for all properly sealed sports floors and other maple commercial floor surfaces. Superior resistance to wear, scratching, scuffing and black heel marks. Reduces down time. Ready to play in 24 hours after the final coat is dry.



## Wood Cleaners

### GymClean™ Daily Wood Floor Maintenance Cleaner (#1631)

A highly concentrated, daily wood cleaner designed exclusively for NCL® Water-Based Floor Coatings. The non-flammable formula is safer to use, economical, and dries streak free.

### FastBreak™ Clean and Tack (#1603)

An economical product for cleaning and tacking wood floors. Removes scuffs, heel marks, grease, oil, dried liquids and spills from finished wood floors. Improves traction by keeping the floor clean.



### GymPrep™ Intensive Wood Cleaner (#1632)

Cleans, conditions existing finish, improving adhesion of new coat of finish. Deep cleans surface to remove scuffs, heel marks and black marks. Use GymPrep™ to clean and prepare existing finish prior to recoating.



## Wood Gloss Restorer

### GymBuff™ Gloss Restorer (#1630)

A premium gloss restorer for COACHES' SELECT GymShield™ Water-Based Urethane-Acrylic Wood Finish. Improves gloss and traction. Apply with automatic scrubber or mop / bucket and burnish with 1500 RPM or higher speed machine.



World Class Cleaning & Hygiene Solutions™

## COACHES' SELECT SPORTS FLOOR PROGRAM

NCL® Sports Floor Program provides a simple, complete line of products that can cost effectively maintain wood floor surfaces and achieve maximum performance. The finishes are easy to use, environmentally preferred, water-based single component systems. NCL's breakthrough wood finish technology improves performance while simplifying product application and maintenance.

## Wood Floor Care Accessories

### Sand Screens

Mesh floor sand screens made of strong fibers with uniform open construction and a superior abrasive coating. Available in a range of sizes and grades.

#### 80 Grit

10 x 17" Sand Screen (#1617)

#### 120 Grit

10 x 17" Sand Screen (#1619)

10 x 20" Sand Screen (#1623)

#### 150 Grit

10 x 17" Sand Screen (#1628)

10 x 20" Sand Screen (#1629)

### Maroon Prep Pads

Effectively removes wood coatings and prepares surface for recoating.

10 x 17" Maroon Prep Pad (#1625)

10 x 20" Maroon Prep Pad (#1626)

### T-Bar Applicator

Applies a layer of finish to large areas with professional, consistent and even coverage every time.

24" Heavyweight (#1608)

24" Lightweight (#1610)

18" Lightweight (#1611)

### Floor Coater Refills

Specially designed to apply a precise, smooth, lint-free finish to wood floors.

6 x 24" Refill (#1612)

6 x 18" Refill (#1613)





World Class Cleaning & Hygiene Solutions™

ENVIRONMENTALLY RESPONSIBLE

Earth Sense® Green Cleaning Solutions™

Earth Sense® represents the NCL® commitment and dedication to environmentally responsible cleaning products that minimize environmental impact, provide a more positive health profile, improve air and water quality and provide optimum cleaning efficacy at reasonable cost. Cleaning products must work effectively and need to make sense, for the environment, for current and future generations. That's Earth Sense®.

### All Purpose Cleaners

Earth Sense®

**Multi-Purpose Neutral Cleaner (#4050)**  

An environmentally responsible multi-purpose neutral cleaner. Concentrated, dilutes 1:64 for routine cleaning. Readily biodegradable. Green Seal™ Certified GS-37 cleaner.

Earth Sense®

**Neutral Floor Cleaner (#4048)** 

A superior daily cleaner for finished floors and other cleaning tasks. pH Neutral, film-free formula is safe for all floor finishes. Concentrated, economical, versatile dilution ratio to match cleaning needs.

### Washroom Cleaners

Earth Sense®

**HD Washroom Cleaner (#4047)** 

A synergistic, mild organic acid blend and naturally derived surfactant system that removes hard water stains from restroom fixtures while promoting a positive environmental profile.

### Degreaser Cleaners

Earth Sense®

**Degreaser Cleaner (#4035)**  

Synergistic surfactant system provides enhanced cleaning and degreasing performance without the use of solvents. Green Seal™ Certified GS-37 cleaner.

### Glass & Multi-Surface Cleaners

Earth Sense®

**RTU Glass & Hard Surface Cleaner (#4045)** 


A convenient, ready-to-use, non-ammoniated, environmentally preferable glass and hard surface cleaner. Cleans without streaks or smears. Readily biodegradable.

Earth Sense®

**Multi-Surface Cleaner with H<sub>2</sub>O<sub>2</sub> Super Concentrate (#4030)** 

Outstanding multi-surface cleaner uses the power of hydrogen peroxide, all natural citrus solvents and environmentally preferred detergents. Dilute according to soil conditions.

Earth Sense®

**RTU Extra HD Multi-Surface Cleaner with H<sub>2</sub>O<sub>2</sub> (#4031)** 

A powerful, ready-to-use, multi-surface cleaner uses the power of hydrogen peroxide, all natural citrus solvents and environmentally preferred detergents. Safe for use on any water washable surface.

Earth Sense®

**Neutral Disinfectant Detergent (#4038)** 

Environmentally responsible hospital grade, neutral pH disinfectant cleaner. Dilutes 2 oz per gallon (1:64). Safe for use on floors, any water washable surface. EPA Registered.





## Floor Care

### Aspire™

#### Metal-Free Sealer / Finish (#0555)

Metal-free, environmentally responsible, high performance floor finish/sealer. This low odor formulation produces an initial wet-look gloss and responds very well to any speed buffing or burnishing. Green Seal™ Certified GS-40

### Evergreen™ Finish

#### Super-Durable Green Sealer Finish (#0508)

Go green with this environmentally responsible floor finish. Evergreen™ finish is more durable and produces a greater shine than one would normally expect from a “green” finish. Green Seal™ Certified GS-40

### Green Impact™

#### Speed Stripper (#1053)

Green Impact is the ultimate in eco-friendly floor stripping. Low odor formulation does not contain butyl, phosphates, free alkali, NPE / APE surfactants, or added fragrances. Green Seal™ Certified GS-40

### ZooOOM™

#### All Green Speed Stripper (#1065)

An environmentally responsible, mild pH speed stripper that removes even heavily burnished finishes without the harsh “floor stripper odor”. The non-butyl G-10™ wetting technology stays wet longer, reduces dry-back problems and saves labor costs.

## Hand Care

### Earth Sense®

#### Certified Green Liquid Hand Cleaner (#4039)

A rich lathering “liquid” hand cleaner that is gentle, non-irritating, safer for sensitive skin. Leaves hands clean and fresh. Environmentally responsible, no added dyes or fragrance. Certified under GS-41A by Green Seal, Inc.

### Earth Sense®

#### Certified Green Foaming Hand Cleaner (#4041)

A rich lathering “foaming” hand cleaner that is gentle, non-irritating, safer for sensitive skin. Leaves hands clean and fresh. Environmentally responsible, no added dyes or fragrance. Certified under GS-41A by Green Seal, Inc.

### Earth Sense® Foam Safe (#4036)

A rich lathering “foaming” hand cleaner that is gentle, non-irritating, safer for sensitive skin. Leaves hands clean and fresh. Pleasant, green apple fragrance.



## Green Initiatives Supported by NCL®

### Green Seal, Inc.

Green Seal, Inc. is an independent, non-profit organization that uses science based standards and the power of the marketplace to create a more sustainable world. Green Seal, Inc. has no financial interest in the products that it certifies nor in any manufacturer or company. Thus Green Seal™ Certified products provide credible, objective and unbiased certifications whose only purpose is to direct the purchaser to environmentally responsible products and services. Only products that are Green Seal™ Certified carry the Green Seal™ Certified logo.



National Chemical Laboratories has products certified under the following Green Seal™ Standards:

- GS-37 Industrial and Institutional Cleaners
- GS-40 Industrial and Institutional Floor Care Products
- GS-41 Industrial and Institutional Hand Cleaners

**NCL® is a Proud Sponsor for the development of the Green Seal™, Inc., Environmental Standard for Cleaning Services (GS-42)**

### Earth Sense® Seal of Assurance

The Earth Sense® Seal of Assurance is awarded to an NCL® product based on its individual “Eco-Profile” which looks at three important criteria: Chemical Ingredients, Human Toxicity and Environmental impact.



**Chemical Ingredients:** Traditional cleaning products have specific ingredients which can lead to negative environmental or health issues. These include:

Phosphates, Silicates, Solvents, APE / NPE Surfactants, Acids, Synthetic Fragrance, Chelating Agents and Free Alkali. Earth Sense® formulations perform the desired cleaning function, but do so with ingredients that provide a more positive environmental and health profile.

**Human Toxicity:** To be a truly green product, human toxicity must be at a minimum. Close evaluation of the toxicity, irritation and sensitization of both skin and eyes as well as ingestion and inhalation hazards are important.

**Environmental Impact:** Green products must have a positive environmental profile when evaluated on a life-cycle basis. The effect on the water treatment systems, biodegradability, air quality, water quality, VOC's, combustibility, flammability, and recyclability are very important factors in the evaluation.



# DUAL-BLEND®

NCL® DUAL-BLEND® Chemical Management System is easy to use and provides a consistent, accurate dilution each and every time. Dilution Control... Your Way. The unique DUAL-BLEND® bottle design incorporates the DUAL-LINK™ connector that fits both the DUAL-BLEND® Wall Unit and the DUAL-BLEND® Portable Dispensing Unit. Diluting cleaning chemicals properly saves real money by ensuring the optimum chemical cleaning performance and increasing the safety of workers.

## DUAL-BLEND® JR. Modular Dispensing Unit (#4114)

A completely closed dispensing system that reduces contact with concentrated chemical.

- Dispenses product to both bottles and buckets.
- Approved "Action-Gap" ASSE back flow device.
- Simple to install. Minimum setup required. No tips to insert, no tubes to install. Comes ready to use, simply mount on wall, connect to water source, insert products and begin diluting products.

# DUAL-BLEND® JR.

Modular Dispensing Unit



DUAL-BLEND JR. Modular Dispensing Unit (#4114)

## DUAL-BLEND® Chemical Management System (#4113)

A completely closed dispensing system that reduces contact with concentrated chemical.

- Dispenses all four products to both bottles and buckets.
- One-handed quart bottle filling.
- Lockable cabinet that keeps product concentrates safe.
- Approved "Action-Gap" ASSE back flow device.
- Simple to install. Minimum setup required. No tips to insert, no tubes to install. Comes ready to use, simply mount on wall, connect to water source, insert products and begin diluting products.
- Replacement DUAL-Blend® swivel cap available (#6747).



DUAL-BLEND Chemical Management System (#4113)

## DUAL-BLEND® Portable Dispensing Unit (#4165)

Minimum setup required. Quick and easy to use.

- Portable, use anywhere normal water source is available.
- Pre-set "in-Container" metering devices assure accurate dilutions every time.
- Standard garden hose fitting.
- Ergonomic handle is comfortable and easy to use.
- Locking trigger mechanism.



## DUAL-BLEND® Portable Dispensing Kit (#4166)

Portable Dispensing System comes complete with DUAL-BLEND™ Portable Dispensing Unit, Filling Nozzle, 6' hose, Water Quick Connect Set, and Backflow preventer.





## Deodorant

### DUAL-BLEND® #10 Malodor Counteractant (#5080)

Exceptional pleasantly fresh fragrance coupled with our exclusive MCA™ Malodor Counteractant offers superior control of offensive odors from restrooms, hotel guest rooms, and other areas where odors are a problem! Highly concentrated. Non-flammable. Dilution Ratio: 1:32

## Restroom

### Earth Sense® DUAL-BLEND® #3 Washroom Cleaner (#5073)

An environmentally responsible, mild organic acid cleaner for use in washrooms on surfaces such as bowls, urinals, chrome, sinks, tub and tile. Green Seal™ Certified GS-37 cleaner. Dilution Ratio: 1:20

### DUAL-BLEND® #20 Bathroom Plus Concentrate (#5090)

Fortified, heavy duty disinfectant cleaner. Exceptional cleaning power effectively removes dirt, grime, body oils and hard water deposits. Floral fragrance. EPA Registered. Dilution Ratio: 1:64  
*Available for sale in California*

## Disinfectants / Sanitizer

### DUAL-BLEND® #8 HD Detergent / Disinfectant (#5078)

Fortified, heavy duty disinfectant cleaner. Exceptional cleaning power effectively removes dirt, grime, body oils and hard water deposits. Exclusive Sienna™ Floral fragrance. EPA Registered. Dilution Ratio: 1:64

### DUAL-BLEND® #9 Neutral Disinfectant Cleaner 256 (#5079)

One-step, neutral disinfectant cleaner and deodorant designed for general cleaning, disinfecting, deodorizing, and controlling mold and mildew on hard, non-porous environmental surfaces. Effective against MRSA, HIV-1, HBC, HGV and many more. No added dyes or fragrance. EPA Registered. Dilution Ratio: 1:256

### DUAL-BLEND® #19 Lavender 256™ Neutral Disinfectant Cleaner Deodorizer (#5089)

Economical, high dilution ratio disinfectant cleaner. Effective against HIV-1, HAV, HBV, HCV and many more. Neutral pH formula is safer for use on floors while providing broad spectrum germ control. Lavender fragrance. EPA Registered. Dilution Ratio: 1:256

*Available for sale in California*

### DUAL-BLEND® #23 Saniquat (#5093)

Food service sanitizer. A highly concentrated, multipurpose dual chain quaternary ammonium chloride for use as a no-rinse sanitizer for food service applications. EPA Registered. Dilution Ratio: 1:512

### NEW DUAL-BLEND® #24 Healthcare Disinfectant Cleaner (#5094)

Fortified, heavy duty disinfectant cleaner. Effective against HIV-1, HAV, HBV, HCV and many more. Neutral pH formula is safer for use on floors while providing broad spectrum germ control. Exclusive Floral fragrance. EPA Registered. Dilution Ratio: 1:64

## Floor Stripper

### DUAL-BLEND® #22

### Bare Bones® SC Stripper Super Concentrate (#5092)

An ultra concentrated (over 99% active) formula that quickly cuts through multiple layers of floor finish with excellent wetting and fast penetration of burnished, aged films. Low foaming for use in mop and bucket applications, automatic scrubbers and wet vacuums. 2 to 4 times more active than leading floor strippers. Does not require a neutralizing flood rinse. Dilution Ratio: 1:20



|        |  |
|--------|--|
| 1      | <b>Earth Sense® Glass &amp; Window Cleaner</b><br>Product #: 5071 • Makes 63 gallons per bottle                            |
| 2      | <b>Earth Sense® Multi-Surface Cleaner with H<sub>2</sub>O<sub>2</sub></b><br>Product #: 5072 • Makes 40 gallons per bottle |
| 3      | <b>Earth Sense® Washroom Cleaner</b><br>Product #: 5073 • Makes 13 gallons per bottle                                      |
| 4      | <b>Earth Sense® pH Neutral All-Purpose Cleaner</b><br>Product #: 5074 • Makes 320 gallons per bottle                       |
| 5      | <b>Earth Sense® Degreaser Cleaner</b><br>Product #: 5075 • Makes 20 gallons per bottle                                     |
| 6      | <b>Glass &amp; Hard Surface Cleaner</b><br>Product #: 5076 • Makes 40 gallons per bottle                                   |
| 7      | <b>Heavy Duty Spray Cleaner / Degreaser</b><br>Product #: 5077 • Makes 40 gallons per bottle                               |
| 8      | <b>HD Detergent /Disinfectant</b><br>Product #: 5078 • Makes 40 gallons per bottle   |
| 9      | <b>Neutral Disinfectant Cleaner 256</b><br>Product #: 5079 • Makes 162 gallons per bottle                                  |
| 10     | <b>Malodor Counteractant</b><br>Product #: 5080 • Makes 20 gallons per bottle  |
| 11     | <b>Sha-Zyme™ Grease-Attacking/Anti-Slip/Deodorizing Bio-Cleaner</b><br>Product #: 5081 • Makes 40 gallons per bottle       |
| 17     | <b>Incrediloso™ Lavender Multi-Purpose Cleaner / Deodorizer</b><br>Product #: 5087 • Makes 40 gallons per bottle           |
| 19     | <b>Lavender 256™ Neutral Disinfectant Cleaner Deodorizer</b><br>Product #: 5089 • Makes 162 gallons per bottle             |
| 20     | <b>Bathroom Plus Concentrate</b><br>Product #: 5090 • Makes 40 gallons per bottle  |
| 21     | <b>Neutral Floor Cleaner &amp; Conditioner</b><br>Product #: 5091 • Makes 162 gallons per bottle                           |
| 22     | <b>Bare Bones® SC Stripper Super Concentrate</b><br>Product #: 5092 • Makes 13 gallons per bottle                          |
| 23     | <b>Saniquat</b><br>Product #: 5093 • Makes 320 gallons per bottle  |
| 24 NEW | <b>Healthcare Disinfectant Cleaner</b><br>Product #: 5094 • Makes 40 gallons per bottle                                    |



## Floor Cleaners

### Earth Sense® DUAL-BLEND® #4



#### pH Neutral All-Purpose Cleaner (#5074)

An environmentally responsible cleaner that lifts and suspends soil on all water washable surfaces. pH neutral formula is excellent for cleaning finished floors, ceramic tile, marble, granite and other natural stone, linoleum, desks, walls, counter and painted surfaces. Dilution Ratio: 1:512

### DUAL-BLEND® #17 Incrediloso™ Lavender Multi-Purpose Cleaner / Deodorizer (#5087)

Fortified with an exceptional Lavender fragrance, this product cleans and deodorizes in one easy step! Use on floors, walls, countertops and any water washable surface. This rinse free formula of INCREDILOSOTM is ideal for schools, office buildings, retail stores and other areas where cleaning and deodorization are required. Dilution Ratio: 1:64

### DUAL-BLEND® #21

#### Neutral Floor Cleaner & Conditioner (#5091)

A highly concentrated, neutral pH, rinse free formula that quickly cleans and deodorizes floors and all other water washable surfaces. Proprietary blend of cleaning and conditioning agents rejuvenate floor finish with buffing, extending life of floor finish. It is ideal for schools, office buildings, retail stores and areas where economical, large scale floor cleaning and deodorization is required. Dilution Ratio: 1:256

## Glass & Multi-Surface

### Earth Sense® DUAL-BLEND® #1



#### Glass & Window Cleaner (#5071)

An concentrated, non-ammoniated, environmentally responsible glass and window cleaner. Leaves no streaks or smears. Green Seal™ Certified GS-37 cleaner. Dilution Ratio: 1:100

### Earth Sense® DUAL-BLEND® #2



#### Multi-Surface Cleaner with

#### H<sub>2</sub>O<sub>2</sub> Super Concentrate (#5072)

Outstanding multi-surface cleaner uses the power of hydrogen peroxide, all natural citrus solvents and environmentally preferred detergents. Green Seal™ Certified GS-37 cleaner. Dilution Ratio: 1:64

### DUAL-BLEND® #6

#### Glass & Hard Surface Cleaner (#5076)

An exceptional Glass & Hard Surface Cleaner that cleans without streaks and smears. Ideal for all types of glass or any hard surface, such as windows, counters, chrome, stainless steel, mirrors, porcelain and Plexiglas™. Easily removes smoke, greasy fingerprints and oils. Non-flammable. No rinsing required. Dilution Ratio: 1:64

## Degreasers / Cleaners

### Earth Sense® DUAL-BLEND® #5



#### Degreaser Cleaner (#5075)

Synergistic surfactant system provides enhanced cleaning and degreasing performance without the use of solvents. Green Seal™ Certified GS-37 cleaner. Dilution Ratio: 1:32

### DUAL-BLEND® #7 Heavy Duty

#### Spray Cleaner / Degreaser (#5077)

A revolutionary industrial strength non-butyl degreaser cleaner that rapidly removes most stubborn greasy soils! Safe, non-corrosive, non-flammable formula. Use on all types of metal surfaces. Free rinsing, eliminates dull residue. Dilution Ratio: 1:64

### DUAL-BLEND® #11 SHA-ZYME™ Grease Attacking /Anti-Slip/Deodorizing Bio-Cleaner (#5081)



A no-rinse daily cleaner and degreaser for use on porous hard surfaces such as concrete, quarry tile, grouted surfaces. Non-acid formula eliminates grease, grime, urine deposits and light mineral deposits. Deodorizes as it cleans. Dilution Ratio: 1:64



## Restroom

### Twin Power™ #5

#### Non-Acid Bowl & Bathroom Cleaner (#4005)

Acid-free formula that removes organic stains and hard water deposits. Safe for daily use on all bowls, urinals and fixtures. Exclusive Sienna™ Floral fragrance.

Twin Power™ packaging: LF: 1:32.

### Twin Power™ #8

#### Odor Neutralizer (#4008)

Super Concentrated formula contains ES077 Malodor Counteractant that destroys foul odors at their source. Exclusive Sienna™ Floral fragrance. Twin Power™ packaging: LF: 1:32.

### Earth Sense® Twin Power™ #20

#### Washroom Cleaner (#4020)



An environmentally responsible, mild organic acid cleaner for use in washrooms on surfaces such as bowls, urinals, chrome, sinks, tub and tile. Green Seal™ Certified GS-37 cleaner. Twin Power™ packaging: LF: 1:20, HF: 1:20.

### Twin Power™ #14

#### Bio-Enzymatic Deodorizer / Spotter / Digester (#4014)

Multi-strain, highly active bacteria formulation eliminates organic waste from drains / grease traps. Deodorize pet stains, urine odors, and other organic waste. Exclusive Sienna™ Floral fragrance. Twin Power™ packaging: LF: 1:32, HF: 1:64.

## Disinfectants

### Twin Power™ #7

#### Healthcare Neutral Disinfectant Cleaner (#4007)

Economical, high dilution ratio disinfectant cleaner. Effective against HIV-1, HAV, HBV, HCV and many more. Neutral pH formula is safer for use on floors while providing broad spectrum germ control. Pleasant Fresh fragrance. EPA Registered.

Twin Power™ packaging: LF: 1:256, HF: 1:256.

*Available for sale in California*

### Twin Power™ #17

#### HD Detergent / Disinfectant (#4017)

Fortified, heavy duty disinfectant cleaner. Exceptional cleaning power effectively removes dirt, grime, body oils and hard water deposits. Exclusive Sienna™ Floral fragrance. EPA Registered.

Twin Power™ packaging: LF: 1:64, HF: 1:64.

### Earth Sense® Twin Power™ #21



#### Neutral Disinfectant Cleaner 256 (#4021)

Economical, high dilution ratio disinfectant cleaner. Effective against HIV-1, HAV, HBV, HCV and many more. Neutral pH formula is safer for use on floors while providing broad spectrum germ control. No fragrance added. EPA Registered.

Twin Power™ packaging: LF: 1:256, HF: 1:256.

*Available for sale in California*



World Class Cleaning & Hygiene Solutions™



The Twin Power™ Modular Chemical Dispensing System will redefine how you look at chemical management programs. Utilizing true super concentrates that deliver maximum performance every time, you will increase cleaning efficiency at your facility while keeping cleaning cost in total control. Twin Power Super Concentrate products are color coded, with identifying icons and bilingual labels and wall chart instructions to simplify employee training.

## Glass & Multi-Surface

### Earth Sense® Twin Power™ #18

#### Multi-Surface Cleaner with



#### H<sub>2</sub>O<sub>2</sub> Super Concentrate (#4018)

Outstanding multi-surface cleaner uses the power of hydrogen peroxide, all natural citrus solvents and environmentally preferred detergents. Green Seal™ Certified GS-37 cleaner. Citrus fragrance (no fragrance added.) Twin Power™ packaging: LF: 1:32, HF: 1:256.

### Earth Sense® Twin Power™ #19



#### Glass & Window Cleaner (#4019)

An concentrated, non-ammoniated, environmentally responsible glass and window cleaner. Leaves no streaks or smears. Green Seal™ Certified GS-37 cleaner. Twin Power™ packaging: LF: 1:100.

### Twin Power™ #1

#### Glass and Multi-Surface Cleaner (#4001)

Concentrated, non-ammoniated formula cuts through soils fast. Non-ammoniated, low odor formula. Leaves no streaks or smears. Safe for use on glass, mirrors, Plexiglas®, plastics and most other types of surfaces. Twin Power™ packaging: LF: 1:32.





## Floor Care

### Earth Sense® Twin Power™ #16 pH Neutral All-Purpose Cleaner (#4016)

An environmentally responsible cleaner that lifts and suspends soil on all water washable surfaces. pH neutral formula is excellent for cleaning finished floors, ceramic tile, marble, granite and other natural stone, linoleum, desks, walls, counter and painted surfaces. Green Seal™ Certified GS-37 cleaner. Twin Power™ packaging: LF: 1:32, HF: 1:512.

### Twin Power™ #4 Deodorizing Neutral Cleaner (#4004)

A daily neutral cleaner that cleans and deodorizes in one step with our exclusive Sienna™ fragrance. Residue free, can be used on vinyl, VCT, asphalt tile as well as terrazzo, other resilient and non-resilient floor surfaces. Twin Power™ packaging: LF: 1:32, HF: 1:256.

## Degreaser / Cleaners

### Earth Sense® Twin Power™ #35 Degreaser Cleaner (#4035)

Synergistic surfactant system provides enhanced cleaning and degreasing performance without the use of solvents. Green Seal™ Certified GS-37 cleaner. Twin Power™ packaging: LF: 1:8, HF: 1:64.

### Twin Power™ #3 Heavy Duty Non-Butyl Degreaser Cleaner (#4003)

Fortified non-butyl formula quickly emulsifies grease and grime. Dual use for spray and wipe, mop bucket/automatic scrubber application. Twin Power™ packaging: LF: 1:32, HF: 1:256.

### Twin Power™ #2 Heavy Duty- Spray & Wipe Cleaner (#4002)

High performance spray and wipe cleaner. Super-Concentrated, powerful formula is safe for use on any water washable surface. Twin Power™ packaging: LF: 1:32.

### Twin Power™ #22 Sha-Zyme™ Grease Attacking / Anti-Slip Deodorizing Bio-Cleaner (#4022)

A no-rinse daily cleaner and degreaser for use on porous hard surfaces such as concrete, quarry tile, grouted surfaces. Non-acid formula eliminates grease, grime, urine deposits and light mineral deposits. Deodorizes as it cleans. Twin Power™ packaging: LF: 1:32, HF: 1:64.

High quality, laminated, GHS compliant secondary use labels in every case of concentrate.



## Twin Power™ Product Selection Chart

| PRODUCT NO. | DESCRIPTION                                   | DILUTION RATE          | PRODUCT NO. | DESCRIPTION  | DILUTION RATE          | CERT.                  |
|-------------|---|------------------------|-------------|--|------------------------|------------------------|
| 1           | Glass & Multi Surface Cleaner                 | LF: 1:32               | 16          | pH Neutral All-Purpose Cleaner                           | LF: 1:32<br>HF: 1:512  | GREEN SEAL<br>UL       |
| 2           | Heavy Duty Spray & Wipe Cleaner               | LF: 1:32               | 17          | HD Detergent / Disinfectant Cleaner                      | LF: 1:64<br>HF: 1:64   | EPA REG.               |
| 3           | Heavy Duty Non-Butyl Degreaser Cleaner        | LF: 1:32<br>HF: 1:256  | 18          | Multi-Surface Cleaner with H <sub>2</sub> O <sub>2</sub> | LF: 1:32<br>HF: 1:256  | GREEN SEAL             |
| 4           | Deodorizing Neutral Cleaner                   | LF: 1:32<br>HF: 1:256  | 19          | Glass & Window Cleaner                                   | LF: 1:100              | GREEN SEAL<br>UL       |
| 5           | Non-Acid Bowl & Bathroom Cleaner              | LF: 1:32               | 20          | Washroom Cleaner   | LF: 1:20<br>HF: 1:20   | GREEN SEAL<br>UL       |
| 7           | Healthcare Disinfectant Neutral Cleaner       | LF: 1:256<br>HF: 1:256 | 21          | Neutral Disinfectant Cleaner 256                         | LF: 1:256<br>HF: 1:256 | EPA REG.<br>GREEN SEAL |
| 8           | Odor Neutralizer                              | LF: 1:32               | 22          | Sha-Zyme   | LF: 1:32<br>HF: 1:64   | UL                     |
| 14          | Bio-Enzymatic Deodorizer / Spotter / Digester | LF: 1:32<br>HF: 1:64   | 35          | Degreaser Cleaner  | LF: 1:8<br>HF: 1:64    | GREEN SEAL<br>UL       |

## Equipment

### Twin Power™ Modular Chemical Dispensing Unit (#4110)

ES-Gap™ Eductor provides complete backflow prevention and broad regulatory acceptance. Unique cartridge design offers dual flow and dilution control from the same super-concentrate container. Pre-set "In-Container" metering devices assure accurate dilutions every time and reduces problems with high water pressure. Eliminates chemical contact for added worker safety. Easy to install, space saving design. Locking high flow button to fill mop buckets, automatic scrubbers or extractors quickly and easily.

### Porta-Power™ Portable Chemical Dispensing Unit (#4115)

ES-Gap™ Eductor provides complete backflow prevention and broad regulatory acceptance. Unique cartridge design offers dual flow and dilution control from the same super-concentrate container. Pre-set "In-Container" metering devices assure accurate dilutions every time and reduces problems with high water pressure. Eliminates chemical contact for added worker safety. Easy to install, space saving design. Locking high flow button to fill mop buckets, automatic scrubbers or extractors quickly and easily.

### Twin Power Handi Hold Rack (#4125)

Sturdy, powder coated wire holding rack. Sturdy, rust resistant wire construction. Convenient, locking bar holds product securely in place. Versatile, holds 6 Twin Power™ containers or 3 Ready...Set...CLEAN!® containers.





## Disinfectants

### Ready... Set... CLEAN!® #8

#### HD Detergent / Disinfectant (#4078-35)

Fortified, heavy duty disinfectant cleaner. Exceptional cleaning power effectively removes dirt, grime, body oils and hard water deposits. Exclusive Sienna™ Floral fragrance. EPA Registered. Ready...Set...CLEAN!® package: 1:64.

### Ready... Set... CLEAN!® #9

#### Neutral Disinfectant Cleaner 256 (#4079-35)

Economical, high dilution ratio disinfectant cleaner. Effective against HIV-1, HAV, HBV, HCV and many more. Neutral pH formula is safer for use on floors while providing broad spectrum germ control. No fragrance added. EPA Registered.

Ready...Set...CLEAN!® package: 1:256. **Available for sale in California**

## Floor Cleaners

### Earth Sense® Ready... Set... CLEAN!® #4

#### pH Neutral All-Purpose Cleaner (#4074-35)



An environmentally responsible cleaner that lifts and suspends soil on all water washable surfaces. pH neutral formula is excellent for cleaning finished floors, ceramic tile, marble, granite and other natural stone, linoleum, desks, walls, counter and painted surfaces.

Green Seal™ Certified GS-37 cleaner. Ready...Set...CLEAN!® package: 1:512.

### Ready... Set... CLEAN!® #17

#### Incrediloso™ Lavender (#4087-35)

Fortified with an exceptional Lavender fragrance, this product cleans and deodorizes in one easy step! Use on floors, walls, countertops and any water washable surface. This rinse free formula of Incrediloso™ is ideal for schools, office buildings, retail stores and other areas where cleaning and deodorization are required. Ready...Set...CLEAN!® package: 1:64.



World Class Cleaning & Hygiene Solutions™



## Portable Dilution System

Cleaning performance, economy, versatility, portability, value. Ready...Set...CLEAN!® from NCL® has it all! We use super concentrate technologies along with proven Green Seal® Certified formulas to develop a dispensing program that delivers exceptional cleaning power where you want it, when you want it! Ready...Set...CLEAN!® simplifies training of your housekeeping staff, and keeps you in compliance, especially important if pursuing green building initiatives such as LEED.

## Glass & Multi-Surface

### Earth Sense® Ready... Set... CLEAN!® #1

#### Glass & Window Cleaner (#4071-35)



A concentrated, non-ammoniated, environmentally responsible glass and window cleaner. Leaves no streaks or smears. Green Seal™ Certified GS-37 cleaner. Ready...Set...CLEAN!® package: 1:100.

### Earth Sense® Ready... Set... CLEAN!® #2

#### Multi-Surface Cleaner

#### with H<sub>2</sub>O<sub>2</sub> Super Concentrate (#4072-35)



Outstanding multi-surface cleaner uses the power of hydrogen peroxide, all natural citrus solvents and environmentally preferred detergents. Green Seal™ Certified GS-37 cleaner. Ready...Set...CLEAN!® package: 1:64.



## Degreaser / Cleaners

### Earth Sense® Ready... Set... CLEAN!® #5 Degreaser Cleaner (#4075-35)

Synergistic surfactant system provides enhanced cleaning and degreasing performance without the use of solvents. Green Seal™ Certified GS-37 cleaner. Ready...Set...CLEAN!® package: 1:32.

### Ready... Set... CLEAN!® #11 Sha-Zyme™ Grease Attacking / Anti-Slip Deodorizing Bio-Cleaner (#4081-35)

A no-rinse daily cleaner and degreaser for use on porous hard surfaces such as concrete, quarry tile, grouted surfaces. Non-acid formula eliminates grease, grime, urine deposits and light mineral deposits. Deodorizes as it cleans. Ready...Set...CLEAN!® package: 1:32.

## Equipment

### Ready... Set... CLEAN!® Portable Dispensing Unit (#4160)

Portable Dispensing Unit (PDU) is a low cost solution for 'no-chemical contact' dispensing. The PDU is simple to set-up and safe and easy to use. The PDU is universal, it fits on any Ready...Set...CLEAN!® product container.

### Ready... Set... CLEAN!® Portable Dispensing System (#4161)

Portable Dispensing System comes complete with RSC Portable Dispensing Unit, Filling Nozzle, 6' hose, Water Quick Connect Set, and Backflow preventer.

### Ready... Set... CLEAN!® Foaming Nozzle (#4162)

Interchange with the standard filling nozzle. Use to create a rich, clinging foam directly from the Ready...Set...CLEAN!® container.

## Ready... Set... CLEAN!® Product Dilution Chart

|    |   |       |
|----|---|-------|
| 1  | Earth Sense® Glass & Window Cleaner                                   | 1:100 |
| 2  | Earth Sense® Multi-Surface Cleaner with H <sub>2</sub> O <sub>2</sub> | 1:64  |
| 4  | Earth Sense® pH Neutral All Purpose Cleaner                           | 1:512 |
| 5  | Earth Sense® Degreaser Cleaner  | 1:32  |
| 8  | HD Detergent / Disinfectant   | 1:64  |
| 9  | Neutral Disinfectant Cleaner 256                                      | 1:256 |
| 11 | Sha-Zyme™ Grease Attacking / Anti-Slip Deodorizing Bio-Cleaner        | 1:32  |
| 17 | Incrediloso™ Lavender Multi-Purpose Cleaner Deodorant                 | 1:64  |

## Dispenser Features / Benefits



High quality, laminated, GHS compliant secondary use labels in every case of concentrate.





## Encapsulating Carpet Care

### All-In-One™

#### Encapsulating Carpet Brush / Bonnet Cleaner (#0693)

Our premium ECT™ Encapsulating Crystal Technology carpet cleaner for bonnet and low moisture brush machines. Recommended for use on all types of carpets. Formulated with a universal fresh fragrance. Minimizes rinsing requirements and out-of-service time.

### All-In-One™ RTU

#### Encapsulating Carpet Brush / Bonnet Cleaner (#0694)

Ready To Use, professional strength encapsulating carpet cleaner and spot remover for all types of carpeting. Eliminates discoloration problems from wicking. Multi-functional product designed for low moisture cleaning processes.

## Cleaners

### Edge-Plus™

#### Encapsulating Carpet Extraction Cleaner (#0660)

Carpet extraction cleaner that incorporates exclusive EPT™ - Encapsulating Powder Technology to trap soil and allow for easy vacuuming of residue. Also includes malodor counteractants and Giane™ fragrance.

### Burst-Plus™

#### Encapsulating Concentrated Rotary / Dry Foam Carpet Shampoo (#0670)

Rotary and dry foam cleaner for all types of carpeting, including stain resistant. Incorporates exclusive EPT™ - Encapsulating Powder Technology to trap soil and allow for easy vacuuming of residue. Also includes malodor counteractants and Giane™ fragrance.

### Spray Kleen-Plus™

#### Encapsulating Bonnet / Traffic Lane Cleaner (#0665)

Highly concentrated bonnet and traffic lane cleaner for all types of carpeting, including stain resistant. Incorporates exclusive EPT™ - Encapsulating Powder Technology and powerful non-butyl solvents to quickly penetrate oil, grease, and dry soils for easy removal. Also contains anti-re-soiling technology and Giane™ fragrance

### Soil Fighter Plus™

#### Encapsulating Re-soil Resistant Pre-Spray Concentrate (#0691)

Concentrated pre-spray to remove even the toughest soils. EPT™ - Encapsulating Powder Technology allows for easy vacuuming out of soils and residue. Exclusive anti-re-soiling technology resists dirt and soil entrapment. Safe for use on stain resistant carpeting.

## Heavy Duty Cleaners

### Endure™

#### Heavy Duty Bonnet & Traffic Lane Cleaner (#0621)

Bonnet and traffic lane cleaner with powerful solvents and soil solubilizers for the toughest, heavy duty jobs. Powerful, high pH formula is highly dilutable and cost effective. Not recommended for stain resistant carpets.

### Vigor™

#### Heavy Duty Extraction Cleaner (#0620)

Heavy duty extraction cleaner for extreme carpet cleaning situations. Formulated for truck mount systems. Highly dilutable and cost effective formula. Not recommended for stain resistant carpets.

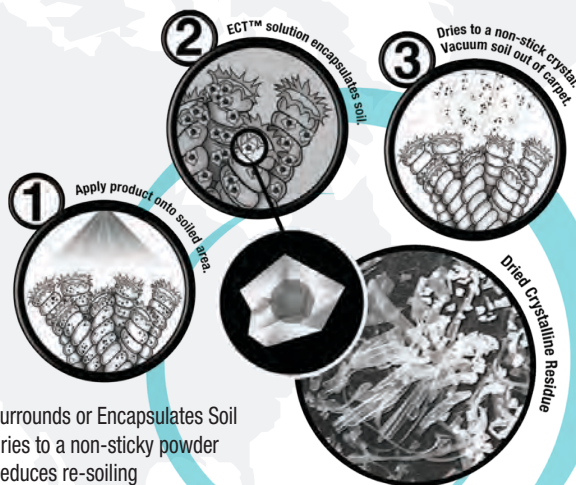


World Class Cleaning & Hygiene Solutions™

## Carpet Care Solutions™

NCL® Carpet Care Solutions™ is a comprehensive system of products including cleaners, spot removers, protectors and accessory products offering your facility a simple, cost effective program for maintaining carpets. Our premium encapsulation technology, ECT™ Encapsulating Crystal Technology, incorporates specialized crystalline forming ingredients that result in the driest, most friable crystalline residue that is available in carpet care products today.

 Encapsulating Crystal Technology



- Surrounds or Encapsulates Soil
- Dries to a non-sticky powder
- Reduces re-soiling
- Lengthens time between cleanings
- Extends life of the carpet
- Improves indoor air quality
- Reduces labor costs



## Spot Removers

### Extreme Plus™

#### Encapsulating Universal Carpet Spot Remover (#0675, #0676)

Universal encapsulating spot remover for oil and water based stains, such as food, ink, petroleum, and grease. Safe for use on stain resistant carpeting and also works as a pre-spray for traffic lanes. Formulated with exclusive Giane™ fragrance.

### Command™

#### Oil / Tar / Grease Carpet Spot Remover (#0622)

Superior spot remover to rapidly penetrate and remove stains such as oil, tar, grease, and other petroleum based sources. Not recommended for use on stain resistant carpets.

### Tannin Out™

#### Coffee / Tea / Browning Carpet Spot Remover (#0685)

Ready To Use, low foaming, spot cleaner for removal of tannin based stains, such as coffee or tea, cola, wine, or rust. Buffered with a mild organic acid to neutralize excess alkalinity.

### Bio-Kleen Plus™

#### Protein Spot & Stain Remover (#0681)

Ready To Use, bio-enzymatic spot cleaner and pre-spray to work against organic stains such as: food, milk, urine, vomit, blood, feces, and pet stains. Safe for use on stain resistant carpet. Deodorizes as it cleans with Giane™ fragrance.

## STAIN REMOVAL CHART

| TYPE OF STAIN   | CARPET CARE PRODUCT(S) |               |                 |             |
|-----------------|------------------------|---------------|-----------------|-------------|
|                 | ALL-IN-ONE™ RTU        | EXTREME PLUS™ | BIO-KLEEN PLUS™ | TANNIN OUT™ |
| Asphalt         | ●                      | ●             |                 |             |
| Blood           |                        |               | ●               |             |
| Catsup          | ●                      | ●             | ●               |             |
| Chocolate       |                        |               | ●               |             |
| Coffee          |                        |               | ●               | ●           |
| Cola            |                        |               |                 | ●           |
| Fruit Juice     | ●                      | ●             | ●               |             |
| Grease          | ●                      | ●             | ●               |             |
| Human Waste     |                        |               | ●               |             |
| Ink (Ballpoint) | ●                      | ●             |                 |             |
| Iodine          | ●                      | ●             |                 |             |
| Mud             | ●                      | ●             |                 |             |
| Mustard         | ●                      | ●             | ●               |             |
| Oil             | ●                      | ●             |                 |             |
| Paint (Latex)   | ●                      | ●             |                 |             |
| Paint (Oil)     | ●                      | ●             |                 |             |
| Rust            |                        |               |                 | ●           |
| Tar             | ●                      | ●             |                 |             |
| Tea             | ●                      | ●             |                 | ●           |
| Urine           | ●                      | ●             | ●               |             |
| Vomit           | ●                      | ●             | ●               |             |
| Wine            | ●                      | ●             |                 | ●           |

## Treatments

### Rinse Away Plus™

#### Carpet Rinse / Residue Neutralizer (#0692)

Mild organic rinse to safely neutralize excess alkalinity while removing embedded detergent residue. Also eliminates problems with browning, yellowing, and water spots. Highly concentrated formula is fast drying and safe for stain resistant carpets.

### Foam Break™

#### Concentrated Carpet Defoamer (#0650)

Use friendly, cost effective solution to controlling excess foam. Recommended for use in extraction equipment, automatic scrubbers, wet-vacs, steam cleaners, injectors, buckets, sinks, and any other area where foam is a problem.

### Shield Plus™

#### Carpet Protector with Resistan™ (#0690)

Protects against dirt, spots, and stains with Resistan™ fiber protection technology. Water based formula is non-toxic, while enhancing anti-static properties and extending the life of the carpet. Makes carpeting, including stain carpets resistant, easier to clean.

## CARPET PRODUCT SELECTION CHART

| TYPE OF PROCEDURE                     | CARPET CARE PRODUCT(S) | POSITIONING  |
|---------------------------------------|------------------------|--|
| Pre-Treatment / Traffic Lane Cleaning | ALL-IN-ONE™            | Combination Brush / Bonnet & Pre-Treatment Premium ECT™ Formula                  |
|                                       | ALL-IN-ONE™ RTU        | Ready-To-Use Combination Brush / Bonnet & Pre-Treatment, Premium ECT™ Formula    |
|                                       | EDGE PLUS™             | Combination Extraction & Pre-Treatment EPT™ Formula                              |
|                                       | SOIL FIGHTER PLUS™     | EPT™ Formula   |
|                                       | SPRAY KLEEN PLUS™      | Combination Brush / Bonnet & Pre-Treatment EPT™ Formula                          |
|                                       | ENDURE™                | Combination Bonnet / & Traffic Lane Cleaner High Performance, Heavy Duty Formula |
| Brush / Bonnet Cleaning               | ALL-IN-ONE™            | Premium ECT™ Formula   |
|                                       | ALL-IN-ONE™ RTU        | Ready-To-Use Combination Brush / Bonnet & Pre-Treatment, Premium ECT™ Formula    |
|                                       | SPRAY KLEEN PLUS™      | EPT™ Formula   |
|                                       | ENDURE™                | High Performance, Heavy Duty Formula   |
| Extraction Cleaning                   | ALL-IN-ONE™            | Premium ECT™ Formula   |
|                                       | EDGE PLUS™             | EPT™ Formula   |
|                                       | VIGOR™                 | High Performance, Heavy Duty Formula   |
| Dry Foam Cleaning                     | BURST PLUS™            | EPT™ Formula   |
| Post-Cleaning Treatment               | RINSE AWAY PLUS™       | Acid Rinse, Neutralizer  |
|                                       | SHIELD PLUS™           | Carpet Protector   |
| Specialty                             | FOAM-BREAK™            | Defoamer   |



## Glass & Hard Surface

### MAIN SQUEEZE™

#### Glass & Hard Surface Cleaner (#4170-49)

An exceptional Glass & Hard Surface Cleaner that cleans without streaks and smears. Ideal for all types of glass or any hard surface, such as windows, counters, chrome, stainless steel, mirrors, porcelain and Plexiglas™. Makes 64 quarts per bottle.

## Degreaser

### MAIN SQUEEZE™

#### Earth Sense® Degreaser Cleaner (#4171-49)

An outstanding cleaner degreaser made with no phosphates, or nonylphenol ethoxylate surfactants. Readily biodegradable with no VOC's, no added fragrance, no silicates, no chelating agents or caustics. Synergistic surfactant system provides enhanced cleaning and degreasing performance. Ideal for general purpose cleaning and degreasing in kitchens, food service, office buildings, light industrial facilities and other areas where environmental responsibility and worker safety issues are important. Makes 32 Quarts per bottle.

## All-Purpose

### MAIN SQUEEZE™ Earth Sense®

#### pH Neutral All-Purpose Cleaner (#4172-49)

A high performance pH neutral cleaner that is environmentally responsible made with no phosphates, or nonylphenol ethoxylate surfactants. Readily biodegradable with no VOC's, no added fragrance, no silicates, no chelating agents or caustics. Can be used on vinyl, VCT, asphalt tile, as well as terrazzo and other resilient and non-resilient surfaces. Utilizes linear alcohol sulfonate surfactants that provide comparative performance as traditional surfactant systems, but with far less environmental impact. Use Earth Sense pH Neutral Cleaner for: Finished floors, ceramic tile, marble, granite and other natural stone, linoleum, desks, walls, counters, painted surfaces. Makes 128 Gallons per bottle.

## Disinfectant

### MAIN SQUEEZE™ Lavender 256™ Neutral Disinfectant Cleaner Deodorizer (#4173-49)

This product is for use on hard, non-porous surfaces in hospitals, healthcare facilities, nursing homes, business and office buildings, restrooms, institutions, schools, colleges, commercial and industrial sites. This product is a one-step germicidal disinfectant, cleaner and deodorant designed for general cleaning, disinfecting, deodorizing and controlling mold and mildew on hard, non-porous surfaces. Kills Pandemic 2009 H1N1 Influenza A Virus. EPA Registered. Makes 64 gallons per bottle.



World Class Cleaning & Hygiene Solutions™



## Main Squeeze Concentrate

NCL's MAIN SQUEEZE™ Concentrate Offers the Best Performing Cleaners for Your Facility's Breakroom, Offices & Restroom Cleaning Needs! Utilizing Easy to Measure-and-Pour Dispensing Bottles. A simple squeeze fills the dispensing chamber, making it easy to dispense a measured amount.



High quality, laminated, GHS compliant secondary use labels in every case of concentrate.





## General Purpose Degreaser Cleaners

### World Class Cleaning Solutions™

National Chemical Laboratories is a leader in cleaning products formulation. For over 50 years our expertise in developing superior cleaning technology for cleaners and degreasers has resulted in products that meet high performance standards. NCL® offers a complete selection of butyl based solvent cleaner/degreasers, non-butyl cleaners/degreasers, all natural citrus based cleaners that are available in economical concentrated formulations as well as convenient ready-to-use solutions. Whatever your cleaning challenge, NCL® has products that are proven to meet your needs.



#### Conkleen 204™ Heavy-Duty Concrete Cleaner (#0560)

A powerful cleaner that rapidly removes rubber tire marks and other stubborn soils from concrete and many other surfaces. Water-based formula is non-flammable. Controlled foaming formula, for use in automatic equipment and wet vacuums. Strong alkaline formula for removing heavy food generated grease and oil. USDA authorized Class A4.

#### Chem-Eez™ Heavy-Duty Degreaser / Cleaner (#1001)

A concentrated, highly effective degreaser / cleaner for use in industrial and commercial applications. Concentrated formula, high dilution ratios for economical use. Water-based formula, non-flammable. Fast grease cutting action for a minimum of labor and waiting. USDA authorized Class A1.

#### Astro-Chem™ Industrial Cleaner / Degreaser (#1020)

Superior formula specifically designed for emulsifying grease from industrial engines and equipment. Water-based formula, non-flammable. Non-Corrosive and safe for use on all ferrous and non-ferrous surfaces. Designed for hand and mechanical applications and high pressure washing. Free rinsing. USDA authorized Class A4, A8.

#### Bullseye™ Non-Butyl Cleaner Degreaser (#1040)

Exceptional degreaser for food service applications. Quickly removes animal fats, greases and soils. Super concentrated, non-butyl formula. Non-Corrosive and safe for use on all ferrous and non-ferrous surfaces. Free rinsing. USDA authorized Class A1.

#### Next Step™ Heavy-Duty Degreaser / Cleaner (#1025)

An exceptional power degreaser cleaner that can be used as a spray, in mop & bucket, pressure washer or autoscrubber. Powerful emulsifier therefore requires less mechanical agitation. Highly concentrated formula works well at high dilutions. Contains corrosion inhibitors so it is safe for use on ferrous metals.

#### Ultramax™ Mild General Purpose Cleaner Degreaser (#1016)

An ultra-safe, yet highly effective neutral cleaner / degreaser for all types of water washable surfaces. Multi-purpose, can be used for a wide variety of cleaning and degreasing applications. Water-based formula, non-flammable. Non-corrosive, non-toxic. Contains corrosion inhibitors. Free rinsing. USDA authorized Class A4.

#### Citrus-Kleen™ Non-Butyl Heavy-Duty Degreaser (#1095)

A non-butyl, low foaming degreaser / cleaner made with natural citrus extracts for use on any water washable surface. Water-based, non-butyl formula is environmentally friendly. Fast grease cutting action reduces cleaning and waiting time. Multi-purpose, use as a cleaner, degreaser and deodorizer. Free rinsing and water-soluble. USDA authorized Class C1.

#### Earth Sense®

##### Degreaser Cleaner (#4035)



Synergistic surfactant system provides enhanced cleaning and degreasing performance without the use of solvents. Green Seal™ Certified GS-37 cleaner.

#### Power-Safe™

##### Multi-Surface Degreaser Cleaner (#1021)

Most powerful, high speed all-purpose cleaner. An ultra-safe, environmentally responsible, highly effective degreaser that can be used on all washable surfaces. Recommended for use on washable surfaces, paints, plastics, soft metals, hard metals, decorative metals, sealed wood and cork, stone, cement, all types of tiles, marble, porcelain, brick, glass, rubber, linoleum, no-wax floors. Dilute with hot or cold water for use. Use by mopping, wiping, spraying, brushing, soaking, foaming or other available methods.





## Ready-To-Use Degreaser Cleaners

### Sun Spray™

#### Ready-To-Use Foaming Citrus Degreaser (#1085, #1086)

A spray and wipe, high foaming, all-natural citrus degreaser and deodorizer for use on all water washable surfaces. Butyl free. Premium quality citrus extracts ensure uniform odor color and solvency. High foaming, clings to vertical surfaces. USDA authorized Class C1.

### Citra Blast™

#### Foaming All-Purpose Cleaner (#2001)

A heavy duty, foaming aerosol citrus spray n' wipe cleaner, spotter or degreaser for any water washable surface. User friendly formula contains no butyl or petroleum distillates. Thick foam clings to vertical surfaces for excellent cleaning power. Premium citrus solvents penetrate soils quickly. USDA authorized Class C1.

### Ruff N' Ready™

#### Ready-To-Use Spray & Wipe Degreaser (#1070, #1071)

Instant acting, convenient, industrial strength degreaser for use on most water washable surfaces. Highly active formula is safe and pleasant to use. Rinses freely, saves labor and is economical. Corrosion inhibited to protect equipment. USDA authorized Class C1.

## General Purpose Cleaners

### Super Nac™

#### Concentrated All-Purpose Cleaner (#0901)

A concentrated, all-purpose cleaner designed for safe removal of all types of soiling conditions. Safe for any water washable surface, powerful for maximum cleaning results. Contains no strong alkalis, glycol ethers and is all biodegradable. Pleasant fresh citrus fragrance. USDA authorized Class A1.

### Deo Pine

#### Pine Oil Deodorant & Cleaner (#1414)

High quality pine oil deodorant and cleaner for all surfaces that are water washable. Contains pure steam distilled pine oil. Cleans and deodorizes in one operation. Synthetic detergent system is free rinsing. Contains no phosphates, completely biodegradable. USDA authorized Class C1.

### Descum

#### Non-Acid Soap Scum Remover & Renovator (#0906)

Remove soap scum and hard water deposits without the use of harsh acids. For use on all hard non-porous surfaces. Excellent penetration of scum build-up to reduce labor costs. No caustics or abrasives to harm surfaces being cleaned. Non-acid, safe to use by all personnel. USDA authorized Class A 1.

### Nu-Look™ Wood Floor Cleaner / Conditioner (#0939)

Neutral pH formula safely and gently cleans and conditions wood surfaces to restore their beauty and natural luster. Concentrated formula is pleasantly scented to deodorize as it cleans.



## Specialty Products

### Titan™

#### Densifying Cleaner / Conditioner (#0565)

Superior densifying cleaner and surface conditioner for polished concrete and terrazzo. Continues the hardening process of any exposed or residual calcium. Enhances the durability of the surface for easier cleaning and longer lasting gloss. Use daily to preserve and protect the floor.

### Citrol™

#### 100% Active - All Natural Citrus Degreaser Deodorizer (#1080, #1079)

Made from pure citrus extracts to remove adhesives, rubber burn marks, tar, asphalt, chewing gum, inks and greases. Cleans without petroleum odors, leaves a pleasant citrus fragrance. Non-corrosive, safe for all metal surfaces including aluminum, brass, copper. Multi-purpose, use as a cleaner, degreaser and deodorizer. Biodegradable. USDA authorized Class C1.

### Pooff™

#### Foaming Cleaner (#0920)

An extremely heavy-duty, highly concentrated foaming cleaner for fast and effective cleaning in food service applications. High foaming action provides the longest contact for complete cleaning. Rinses freely, no film residue for the cleanest surface possible, saves labor. Corrosion inhibited to protect equipment. USDA authorized Class A1.

### Eco-Solv™

#### Non-Chlorinated / Non-CFC Safety Solvent (#1480)

A unique, non-hazardous blend of safe solvents offering outstanding degreasing and residue free evaporation. Non-chlorinated, non-fluorinated, contains no ozone-depleting solvents. Proprietary NCL77 blend of solvents dries without leaving a residue. Allow for safe and complete energized degreasing at 25,000 volts dielectric strength. Natural citrus solvent blend is biodegradable and has pleasant citrus fragrance.



## Multi-Surface Cleaners

### Earth Sense®

#### Multi-Surface Cleaner with H<sub>2</sub>O<sub>2</sub> Super Concentrate (#4030)

Outstanding multi-surface cleaner uses the power of hydrogen peroxide, all natural citrus solvents and environmentally preferred detergents. Dilute according to soil conditions.

## RTU Multi-Surface Cleaners

### Earth Sense® RTU Extra HD

#### Multi-Surface Cleaner with H<sub>2</sub>O<sub>2</sub> (#4031)

A powerful, ready-to-use, multi-surface cleaner uses the power of hydrogen peroxide, all natural citrus solvents and environmentally preferred detergents. Safer for use on any water washable surface.

## Ready-To-Use Glass Cleaners

### Kleer Brite™

#### Non-Ammoniated Window & Glass Cleaner (#1304, #1303)

A quick acting, film free window and glass cleaner which can be used as is or diluted with up to two parts soft water. This non-ammoniated window and glass cleaner is made with deionized water, special solvent blends, exotic wetting agents, corrosion inhibitors and free rinsing detergents.

### C-All™

#### Ammoniated Window & Glass Cleaner (#1315, #1316)

An ammoniated window and glass cleaner which is ready to use and streak free. This institutional formula contains deionized water, anti-resoil additives, corrosion inhibitors, degreasing solvents and ammonia for high performance glass cleaning.

### Earth Sense® RTU Glass & Hard Surface Cleaner (#4045)

A convenient, ready-to-use, non-ammoniated, environmentally preferable glass and hard surface cleaner. Cleans without streaks or smears. Readily biodegradable.

### Sea Brite™

#### Glass and Surface Cleaner (#2002)

A multi-purpose aerosol glass and surface cleaner for many institutional, commercial and industrial cleaning environments. This professional formula is made with pure deionized water, fast evaporating degreasing solvents and anti-re-soiling agents for streak free soil removal. Unique clean & fresh fragrance and rich foam allow its use in many varied areas and conditions.

## Concentrated Glass Cleaners

### 20X™

#### Super Concentrated Glass & Window Cleaner (#1325)

A powerful concentrated window and glass cleaner designed for streak free cleaning. Contains modern volatile detergents, emulsifiers, solvent, and corrosion inhibitors making it ideal for glass and almost any hard glossy surface. Non-ammoniated, no irritating fumes or odors. Super concentrated for the most economical diluted end-use-cost. Formulated to eliminate any possible streaking caused by water hardness. Designed for use with trigger sprayers as well as commercial window cleaning equipment.

## Polishes

### Nu-Hide

#### Plastic Polish (#1330, #1331)

Renovates plastic surfaces, as well as leather, vinyl, rubber, chrome, stainless steel and Formica. Polishes, cleans, protects. Imparts a deep luster while protecting surfaces against drying, fading and cracking caused by sun, ozone and smog. Dissipates static charge to retard the attraction of dust and other airborne soils. Retards fingerprinting and resoiling to prolong times between cleaning. USDA authorized Class A7.

### Glimmer™

#### Stainless Steel Polish / Cleaner (#2006)

3 in 1 Cleaner / Polish / Protectant aerosol for use on stainless steel, chrome, aluminum, any polished or brushed metal surface. Cleans, repairs and protects in one easy step to save time and labor. Thick spray clings to vertical surfaces for easy application. Streak free formula wipes easily. Retards fingerprinting and resoiling to prolong times between cleaning. USDA authorized Class C1.

### Cream Coat™

#### Premium Furniture Polish (#2007)

Fortified with lemon oil, this premier aerosol furniture polish deep-cleans and protects fine wood, vinyl, metal, formica and more. Cleans, repairs and polishes in one easy step to save time and labor. Lemon oil protects wood surfaces and leaves the room smelling fresh. Retards fingerprinting and resoiling to prolong times between cleaning.





## Disinfectant Concentrates

### Neutral-Q™

#### Disinfectant Cleaner Deodorant (#0248)

Broad spectrum disinfectant cleaner that is bacteriocidal, virucidal and fungicidal. Effective in hard water and organic soil load. Pleasant Puri™ fragrance. Dilution ratio: 2 oz per gallon (1:64). Neutral pH, may be used for daily maintenance of finished floors. EPA Registered.

*Available for sale in California*

### Micro-Chem Plus™

#### Disinfectant Detergent (#0255)

Exceptional cleaning ability. Broad spectrum disinfectant cleaner that is bacteriocidal, virucidal and fungicidal. Effective in hard water and organic soil load. Pleasant Citrus fragrance. Dilution ratio: 2 oz per gallon (1:64). EPA Registered.

*Available for sale in California*

### Neutra-Cide 256™

#### Neutral Disinfectant Cleaner/Deodorizer (#0275)

Economical, high dilution disinfectant cleaner. Broad spectrum disinfectant cleaner that is bacteriocidal, virucidal and fungicidal. Effective in hard water and organic soil load. Pleasant Sienna™ (floral) fragrance. Dilution ratio: 1/2 oz per gallon (1:256). EPA Registered.

### Earth Sense® Neutral Disinfectant Detergent (#4038)

Environmentally responsible hospital grade, neutral-pH disinfectant cleaner. Neutral pH formulation. Hospital grade, broad spectrum disinfectant. Recommended for use in Hospitals, schools, universities, institutions, nursing homes, clinics, veterinary offices and office buildings. Dilution ratio: 2 oz per gallon (1:64). EPA Registered.

### Lavender-Quat™

#### Disinfectant, Cleaner, Mildewstat, Fungicide, Virucide\*, Deodorizer (#0230)

One step disinfectant, cleaner and deodorizer saves time and labor. Bacteriocidal, virucidal, fungicidal and mildewstatic. Dilution ratio: 4 oz per gallon (1:32). Neutral pH, safe for use on finished floors. Pleasant Lavender fragrance. EPA Registered.

### Citrus Flower-Quat™

#### Disinfectant, Cleaner, Mildewstat, Fungicide, Virucide\*, Deodorizer (#0234)

One step disinfectant, cleaner and deodorizer saves time and labor. Bacteriocidal, virucidal, fungicidal and mildewstatic. Dilution ratio: 4 oz per gallon (1:32). Neutral pH, safe for use on finished floors. Pleasant citrus flower fragrance. EPA Registered.

### Lemon-Quat™

#### Disinfectant, Cleaner, Mildewstat, Fungicide, Virucide\*, Deodorizer (#0235)

One step disinfectant, cleaner and deodorizer saves time and labor. Bacteriocidal, virucidal, fungicidal and mildewstatic. Dilution ratio: 4 oz per gallon (1:32). Neutral pH, safe for use on any water washable surface. Fresh lemon scent. EPA Registered.

*Available for sale in California*



World Class Cleaning & Hygiene Solutions™

## Disinfectant Solutions™

National Chemical Laboratories is a leader in the manufacture of high performance disinfectant cleaners. NCL® offers a wide array of disinfectant cleaners for your sanitation requirements. From economical, highly concentrated products to convenient, ready-to-use products for all types of surfaces, NCL® has the disinfectants you need for healthcare, office buildings, schools and institutions.

### Mint-Quat™

#### Disinfectant, Cleaner, Mildewstat, Fungicide, Virucide\*, Deodorizer (#0236)

One step disinfectant, cleaner and deodorizer saves time and labor. Bacteriocidal, virucidal, fungicidal and mildewstatic. Dilution ratio: 4 oz per gallon (1:32). Neutral pH, safe for use on finished floors. Fresh mint fragrance. Recommended for daily use. EPA Registered.

### Pine-Quat-Plus™

#### Disinfectant, Cleaner, Mildewstat, Fungicide, Virucide\*, Deodorizer (#0241)

One step disinfectant, cleaner and deodorizer designed for general cleaning, disinfecting, deodorizing, controlling mold and mildew on hard, non-porous environmental surfaces. Dilution ratio: 4 oz per gallon (1:32). Pleasant Pine fragrance. EPA registered.

### Combat™

#### Disinfectant, Cleaner, Mildewstat, Fungicide, Virucide\*, Deodorizer (#0270)

One step disinfectant, cleaner and deodorizer designed for general cleaning, disinfecting, deodorizing, controlling mold and mildew on hard, non-porous environmental surfaces. Dilution ratio: 4 oz per gallon (1:32). Pleasant Astra™ (herbal) fragrance. EPA Registered.



## Disinfectants Ready-To-Use

NEW

### Multi-Stat™

#### Ready To Use Surface Disinfectant Cleaner (#0253)

**Kills SARS-CoV-2 in 60 seconds!**

A convenient, powerful ready-to-use spray disinfectant cleaner. Saves time and labor. Non-acid, user friendly formula. Effective against SARS - CoV-2 in 60 seconds, HIV-1 in 2 minutes, MRSA, MRSA-CA, HIV-1, Avian Influenza A. EPA Registered.

### Avistat-D®

#### RTU Spray Disinfectant Cleaner (#0252)

**Kills SARS-CoV-2 in 60 seconds!**

A convenient, powerful ready-to-use spray disinfectant cleaner. Saves time and labor. Non-acid, user friendly formula. Effective against SARS - CoV-2 in 60 seconds, TB - Mycobacterium Tuberculosis, MRSA, MRSA-CA, HIV-1, Avian Influenza A. EPA Registered. **Available for sale in California**

### Fortress

#### Spray Disinfectant Deodorant (#2004)

A hospital-grade broad-spectrum aerosol spray disinfectant and deodorant. Kills germs and eliminates malodors at their source. Fungicidal and Mildewcidal. Built-in odor counteractants destroy malodors at their source and exclusive cosmetic grade Puri™ perfume leaves behind a pleasant scent after each use. Effective against HIV-1 (AIDS virus). EPA Registered.

### Rely

#### Foaming Disinfectant Cleaner (#2003)

A hospital-grade aerosol foaming disinfectant that cleans, disinfects and deodorizes in one step. Excellent cleaner on a wide variety of soil types and safe for use on any water washable surface. Built-in odor counteractants eliminate foul odors. Cosmetic grade Puri™ perfume. Virucidal, Bacteriacidal, Fungicidal and Mildewcidal. Effective against the HIV-1 (AIDS virus) and Herpes Simplex 2 virus. EPA Registered.

## Disinfectant Wipes

### NCLwipes™ Disinfectant Wipes

#### Lemon Fresh (#4542)

#### Waterfall Fresh (#4541)

**Kills SARS-CoV-2 in 4 minutes!**

NCLwipes™ Disinfectant Wipes clean, disinfect and deodorize in one easy step. NCLwipes™ Disinfectant Wipes save time and labor and are easy to use. No mixing, No measuring, No diluting. Simply pull a wiper from the canister, wipe the surface and discard. NCLwipes™ Disinfectant Wipes is a broad spectrum disinfectant that kills 99% of bacteria in 15 seconds and HIV-1 (AIDS virus) in 1 minute, SARS-Related Coronavirus (SARS-CoV-2) in 4 minutes, Norwalk Virus in 10 minutes, and most other viruses, bacteria in 4 minutes. 7" x 8" wipes, 125 count canister/6 per case. EPA Registered.





## afia™ Foaming Skin Care Solutions

### afia™ Earth Sense® Lavender Morning Foaming Hand Cleaner (#0434)

A rich lathering foam that cleans then rinses out easily to leave hand clean and refreshed. Exceptional Lavender fragrance. This environmentally responsible formula meets the Green Seal Standard GS-41A for institutional hand cleaners and has been certified by Green Seal. For use in schools, universities, institutions and office buildings. **6 x 1000 mL / case**

### afia™ Ocean Mist Foaming Hand Cleaner (#0431)

A rich lathering foam that efficiently cleans, then rinses out easily to leave hands clean and refreshed. Biodegradable and formulated for sensitive skin by eliminating ingredients irritating to skin. Recommended for use in virtually any hand cleaning situation, including schools, universities, institutions, office buildings, and retail. **6 x 1000 mL / case**

### afia™ Harvest Melon Foaming Hand Cleaner (#0430)

A rich lathering foam that efficiently cleans, then rinses out easily to leave hands clean and refreshed. Biodegradable and formulated for sensitive skin by eliminating ingredients irritating to skin. Recommended for use in virtually any hand cleaning situation, including schools, universities, institutions, office buildings, and retail. **6 x 1000 mL / case**

### afia™ Hypoallergenic Certified Foaming Hand Cleaner (#0444)

A rich lathering foam that efficiently cleans, then rinses out easily to leave hands clean and refreshed. Biodegradable and formulated for sensitive skin by eliminating ingredients irritating to skin. Dermatologist tested. **6 x 1000 mL / case**

### afia™ Earth Sense® Certified Green Foaming Hand Cleaner (#0433)

An environmentally responsible, "certified green" foaming hand cleaner. Completely biodegradable. For use in schools, universities, institutions and office buildings. This environmentally responsible formulation meets the Green Seal Standard GS-41A for institutional hand cleaners and has been "certified" by Green Seal. **6 x 1000 mL / case**

### afia™ Anti-Bacterial Foaming Hand Cleaner (#0446)

Formulated with 0.3% PCMX to kill germs quickly. Recommended for use as desired between hand washings to effectively reduce bacteria on the skin. Recommended for use in virtually any hand cleaning situation, including healthcare, schools, universities, institutions, office buildings, and retail. **6 x 1000 mL / case**

### afia™ Spring Blossom Premium Foaming Hand Cleaner (#0436)

A high foaming, pH balanced hand cleaner with a pleasant Spring Blossom fragrance. Formulated with rich emollients, conditioners and lubricants to leave skin soft and refreshed. This blend of bio-based ingredients is a very effective cleaner and environmentally responsible. It rinses easily and leaves no soapy residue on skin. Recommended for hand washing in schools, healthcare settings, extended care facilities, hotels, motels, health clubs, and many more locations. **6 x 1000 mL / case**

### afia™ Foaming Hair and Body Wash (#0435)

A high foaming, pH balanced hair and body wash with a pleasant Lavender Chamomile fragrance. A low irritation formulation with rich emollients and conditioners to leave hair soft and manageable. It rinses easily and leaves no soapy residue on hair or skin. Recommended for general showers and washrooms in schools, healthcare settings, extended care facilities, hotels, motels, health clubs, and many more locations. **6 x 1000 mL / case**



World Class Cleaning & Hygiene Solutions™

## afia™ Skin Care Solutions

NCL® afia™ Skin Care Solutions provide a complete line of hand cleaners including the latest in foaming hand cleaners, anti-microbial hand cleaners, hand sanitizers, and liquid hand cleaners. Our unique packaging is easy to use, and environmentally responsible as it uses 40% less plastic than rigid containers, and reduces waste since there is no valve to throw away with each bag. The afia™ products are designed to work exclusively with afia™ Dispensers for a perfect, leak-free fit everytime.

## afia™ Sanitizing Skin Care Solutions

### afia™ ALCOHOL BASED Foaming Hand Sanitizer (#0440)

A superior quality, 70% Ethyl Alcohol hand sanitizer that exhibits exceptional foaming for an alcohol based product. Recommended for use in virtually any hand sanitizing situation, including healthcare, schools, universities, institutions, office buildings, hospitals, nursing homes. Also ideal for restaurants, super markets and delicatessens, meat prep rooms and institutional kitchens. **6 x 1000 mL / case**

### afia™ Alcohol - Free Foaming Hand Sanitizer (#0445)

Formulated with Benzalkonium chloride to kill germs quickly. Recommended for use as desired between hand washings to effectively reduce bacteria on the skin. Recommended for use in healthcare, schools, universities, institutions, office buildings, retail, restaurants, super markets and delicatessens, meat prep rooms and institutional kitchens. **6 x 1000 mL / case**

### afia™ Foaming E2 Sanitizing Hand Cleaner (#0448)

Formulated with Benzalkonium chloride to kill germs quickly and effectively reduce bacteria on the skin. Recommended for use by food plant personnel prior to handling food or food processing equipment. **6 x 1000 mL / case**



## afia™ Dispensers & Accessories

### afia™ Touch Free White (#4223)

A modern white, touch free design that looks great in all environments. Constructed from durable, high quality ABS plastic for long term performance and reliability. The bag chamber with a window view, accommodates both 1000 ml and 1250 ml bags. Comes complete with foaming valve, installation hardware and 3M adhesive foam strips for simple, easy, secure mounting. Includes 4 AA-cell batteries. **6 per case**

### afia™ Manual White (#4216)

A modern white design that looks great in all environments. The sturdy base is constructed from durable, high quality ABS plastic for long term performance and reliability. The bag chamber with a window view, accommodates up to 1250 mL bags. Complete with an antimicrobial push bar that reduces bacteria, mold, fungi on its surface to protect from degradation. **12 per case**

### afia™ Manual Black (#4217)

A modern black design that looks great in all environments. The sturdy base is constructed from durable, high quality ABS plastic for long term performance and reliability. The bag chamber with a window view, accommodates up to 1250 mL bags. Complete with an antimicrobial push bar that reduces bacteria, mold, fungi on its surface to protect from degradation. **12 per case**

### afia™ Drip Tray (#4222)

This drip tray can be used virtually anywhere to protect floors, walls and countertops against spills or drips. Heavy duty, durable plastic construction. Easy to install, includes mounting hardware and adhesive tape strips. Attach below any afia dispenser. **Individual**

### afia™ Dispenser Stand (#4232)

Sturdy, easy-to-assemble dispenser stand for use with Manual or Touch Free AFIA™ Hand Soap Dispenser products. The 54" Tall stand features a heavyweight base, aluminum pole assembly, and molded faceplate. Entire assembly can be done in minutes. Comes standard with all assembly hardware, and includes a drip tray. **Individual**

afia™ Touch Free White  
(#4223)



afia™ Dispenser Stand  
(#4232)



afia™ Manual White  
(#4216)



afia™ Manual Black  
(#4217)



afia™ Drip Tray  
(#4222)



Dispenser sold separately





## Foaming Hand Cleaners

### Foam Safe™ - Ocean Mist

#### Foaming Hand Soap (#0422)

A premium quality, residue-free, rich foaming hand cleaner. Formulated with emollients and conditioners for a mild, non-irritating hand soap. Pleasant Ocean Mist fragrance.

### Earth Sense® Foam Safe (#4036)

A rich lathering "foaming" hand cleaner that is gentle, non-irritating, safer for sensitive skin. Leaves hands clean and fresh. Pleasant, green apple fragrance.

### Earth Sense® Certified Green

#### Foaming Hand Cleaner (#4041)

A rich lathering "foaming" hand cleaner that is gentle, non-irritating, safer for sensitive skin. Leaves hands clean and fresh. Environmentally responsible, no added dyes or fragrance. Certified under GS-41A by Green Seal, Inc.



World Class Cleaning & Hygiene Solutions™

## Hand Care Solutions™

Healthcare professional and community leaders universally point to proper hand hygiene as the best way to prevent the spread of colds, pandemics and other outbreaks of disease in schools, hospitals, office environments, industry and institutions. Whether you prefer natural or synthetic hand care formulas, liquid or foaming products, anti-microbial hand cleaner, or sanitizing hand foams, NCL® has the right products and delivery systems to meet your needs and budget.



## Natural, Coconut Oil Based Hand Cleaners

### 15% Coconut Oil

#### Pure Liquid Hand Soap (#0305)

Pure coconut oil formulation contains natural emollients and humectants for safer, non-irritating hand cleaning. Traditional thin liquid, green color, with a pleasant Almond fragrance.

#### Pink Lotion

#### Pure Coconut Oil Lotionized Hand Soap (#0330)

Rich and thick for use in dispensing equipment. Pure coconut oil formulation contains natural emollients and humectants for safer, non-irritating hand cleaning. Pink, creamy lotion, with a pleasant Almond fragrance.



## Synthetic, Mild, Lotionized Hand Cleaners

### Pink N' Creamy

#### Lotionized Hand Cleaner (#0345)

A premium grade, viscous, lotion hand cleaner for everyday hand washing. Conditions and protects the hands. Creates a generous rich lather. Pink, lotionized, Almond fragrance.

### White Pearl

#### Luxurious Hand Cleaner and Body Wash (#0470)

A premium grade, pearled, all synthetic lotion hand and body cleaner. Thickened formula prevents dispenser leaking. Formulated with emollients and conditioners for mildness. Creates a generous rich lather. Silver white, pearled, Cherry Almond fragrance.



## Anti-Microbial Hand Cleaners

### Affirm™

#### Anti-Bacterial Lotion Hand Cleaner (#0415)

A rich, lotionized anti-bacterial soap for hands. Exceptional cleaning and user appeal. Conditioners and emollients are ultra mild to the skin. Fortified with PCMX to control germs and transient bacteria. Pink, Herbal Fresh fragrance.

### Defend™

#### Anti-Microbial Hand Cleaner with PCMX™ (#0410)

A rich, pearled anti-microbial soap for hand and body care. Exceptional cleaning and user appeal. Conditioners and emollients are ultra mild to the skin. Fortified with PCMX to control germs and transient bacteria. Silver-White, pearled, Cherry Almond fragrance.

## Hand Cleaner Dispensers & Accessories

### Foam Magic Foaming Hand Soap Dispensers

- Dispenses generous 0.8ml per activation.
- Available in attractive White or Smoke finishes.
- Available in Manual or Touch Free designs.
- Use with #4026A Cartridge to dispense bulk foaming hand cleaners.

**Manual White 20/case: Item (#4206)**

**Touch Free White 12/case: Item (#4213)**

**Touch Free Smoke 12/case: Item (#4214)**

### Refillable Dispenser Cartridges

- Convert bag-in-box and cartridge units to dispense economical bulk hand cleaners.
- Sturdy design for long lasting performance.

**FOAM 1000 ml 0.8 ml 20/case: Item (#4206A)**





## Non-Acid Bowl Cleaners

### Bathroom Plus™

#### Non-Acid Disinfectant Bathroom Cleaner (#1720)

Ready-to-use, one step disinfectant and cleaner for all bathroom fixtures, toilets, urinals and floors. Bactericidal, virucidal, fungicidal and mildewstatic. Signature floral fragrance for long lasting deodorization. Recommended for daily use. EPA Registered. *Available for sale in California*

### Total

#### Non-Acid Bowl & Bathroom Cleaner (#1705)

An acid free, safe to use Bowl and Bathroom Cleaner which effectively cleans tough bowl stains and deodorizes in one easy step. Removes lime scale, rust and mineral deposits. This non abrasive formulation will not etch porcelain or pit fixtures. Accidental spills will not ruin carpeting or clothing. Thickened base insures excellent clinging on vertical surfaces and powerful deodorizing action.

## Specialty Cleaners

### Surge

#### Heavy-Duty Liquid Drain Opener (#1760)

Non-acid drain opener that pours through standing water and goes directly to the clog. Removes scum, hair and grease. Non-fuming, can be used in any drain. Pour through standing water, no need to empty clogged drains. Safe to use, will not harm plumbing fixtures, garbage disposals, porcelain or septic tanks.

### Trigger™

#### Instant Mildew Stain Remover (#1745)

This highly active formula product immediately removes mildew stains from porcelain, tile and other hard surfaces. Simply spray it on and walk away. No rinsing required. Saves time and labor. Formulated with exclusive Mystic™ fragrance!

## Shower Cleaners

### Descum™

#### Non-Acid Soap Scum Remover & Renovator (#0906)

Remove soap scum and hard water deposits without the use of harsh acids. For use on all hard non-porous surfaces. Excellent penetration of scum build-up to reduce labor costs. No caustics or abrasives to harm surfaces being cleaned. Non-acid, safer to use by all personnel.



World Class Cleaning & Hygiene Solutions™

## Restroom Care Solutions™

A clean, sanitary restroom is a reflection of the overall cleanliness of your facility. NCL® offers the most advanced product formulas for cleaning, disinfecting and deodorizing to assure maximum effectiveness and control of disease causing germs in this environment. Our extensive product research and field-testing results in high-performance chemical systems for your critical sanitation needs.



## Creme Cleaners

### Easy Dab® Creme Cleanser (#1702)

An extremely effective viscous crème cleanser designed for polishing porcelain, ceramics and other hard surfaces. This highly thixotropic formulation consists of fine polishing aids, detergents, rust removers, water softeners and wetting agents to provide easy cleaning.

### Soft N' Creamy Deodorizing Creme Cleanser (#1725)

Soft N' Creamy is the worlds finest "extra soft" abrasive creme cleanser with deodorizing action. This exceptional product is can be used on fiberglass, enamel and other high gloss smooth surfaces. Completely free rinsing so it leaves a soil repelling surface. Clings to vertical surfaces for easy application. Excellent for removing soap scum, stubborn spots, rust stains, black marks, grease and other soils.



## Acid Bowl Cleaners

### Wrangler 9.5% HCL Disinfectant Bowl Cleaner (#1735)

A mild acid disinfecting bowl and porcelain cleaner that provides broad spectrum germ control while effectively cleaning most types of toilet fixtures. This non-fuming, thick clinging formula leaves the area with a clean fresh cherry fragrance. Used daily in many hard water conditions. EPA Registered.

### Corral™ Foaming Bathroom Cleaner (#1740)

A uniquely blended phosphoric acid based formulation designed to clean, deodorize, remove scale, rust, calcium (hard water) deposits and other discolorations from bathroom surfaces and floors. Clings to vertical surfaces for maximum cleaning efficiency. Fresh Nuván fragrance.

### Hombre™ High Acid Emulsion Bowl Cleaner (#1730)

A potent, high performance, high acid bowl cleaner designed to remove even the toughest stains caused by rust, lime, calcium and other hard water deposits from porcelain surfaces, toilet bowls and urinals. Powerful fast action saves labor and product costs. De-scales & deodorizes in one step.

### Earth Sense® HD Washroom Cleaner (#4047)

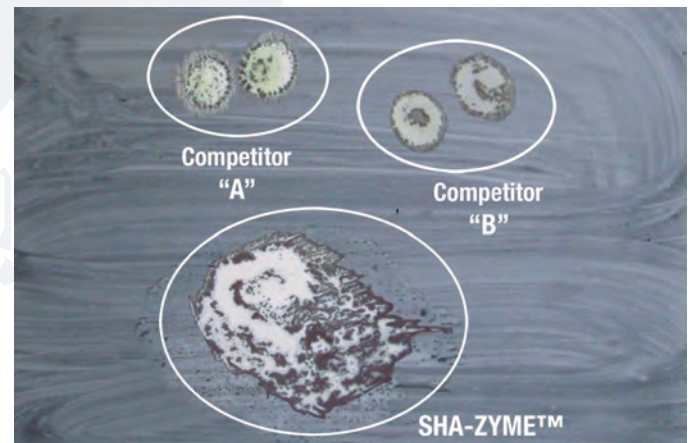
A synergistic, mild organic acid blend and naturally derived surfactant system that removes hard water stains from restroom fixtures while promoting a positive environmental profile. Economical, concentrated formula dilutes 1:15 using cold tap water.

## Bio-Enzymatic Cleaners

### Sha-Zyme™

#### Grease Attacking / Anti-Slip Deodorizing Bio-Cleaner (#1830)

A no-rinse daily cleaner and degreaser for use on porous hard surfaces such as concrete, quarry tile, grouted surfaces. Non-acid formula eliminates grease, grime, urine deposits and light mineral deposits. Deodorizes as it cleans.



### Sha-Zyme™ DRC

#### Deodorizer / Restroom Cleaner / Urine Odor Eliminator (#1831)

A powerful, bio-enzymatic, no-rinse daily cleaner and deodorizer to remove restroom soils and completely eliminate urine deposits and odors. For use on any water washable surface, including porous hard surfaces such as ceramic tile, brick, concrete, quarry tile, any grouted floor surface, rubber matting and non-porous surfaces such as vinyl tile. Eliminates urine deposits and odors.





## Deodorants

### Eternity

#### Long Lasting Malodor Destroyer (#1407, #1413)

A revolutionary multi-purpose malodor destroyer used for controlling obnoxious odors. Utilizes proprietary MCA™ odor inhibitors to change the molecular structure of odor causing substances. Controls odors for over 24 hours. Exclusive MODA™ essence blooms to fill the area with a beautiful modern fresh scent. Concentrated and water soluble.

### Super Cherry

#### Deodorant (#1409)

A general purpose deodorant that is super-concentrated for long lasting effectiveness. Manufactured from a broad spectrum of high potency odor counteractants chosen to quickly neutralize and destroy simple and complex malodors. Pleasant cherry fragrance is universally accepted.

### Fresh Start™

#### Concentrated Malodor Counteractant (#1415)

A revolutionary air freshener & malodor counteractant used for controlling obnoxious odors. Utilizes proprietary MCA™ odor inhibitor to change the molecular structure of odor causing substances. Contains our exclusive Astra™ essence blooms to fill the area with a beautiful modern fresh scent.

### Magic Breeze

#### Lavender Spray Air Freshener (#1428)

Fortified with an exceptional Lavender fragrance and MCA-II™ malodor inhibition technology, Magic Breeze™ removes foul odors from smoke, restrooms and other sources. Magic Breeze™ may also be used in lobbies, public areas, garbage bins; anywhere that long lasting deodorization is needed.

### Magic Breeze

#### Herbal Spray Air Freshener (#1426)

Fortified with an exceptional Herbal fragrance and MCA-II™ malodor inhibition technology, Magic Breeze™ removes foul odors from smoke, restrooms and other sources. Magic Breeze™ may also be used in lobbies, public areas, garbage bins; anywhere that long lasting deodorization is needed.

### Eternity™

#### Air Freshener & Malodor Destroyer (#2012)

A revolutionary aerosol air freshener & malodor counteractant used for controlling obnoxious odors. Utilizes proprietary MCA™ odor inhibitor to change the molecular structure of odor causing substances. Exclusive MODA™ Essence fragrance fills the area with a beautiful modern fresh scent. Controls odors for over 24 hours.

## Citrus Based Deodorants

### Citrol

#### 100% Active - All Natural Citrus Degreaser Deodorizer (#1080, #1079)

Made from pure citrus extracts to remove adhesives, rubber burn marks, tar, asphalt, chewing gum, inks and greases. Cleans without petroleum odors, leaves a pleasant citrus fragrance. Non-corrosive, safe for all metal surfaces including aluminum, brass, copper. Multi-purpose, use as a cleaner, degreaser and deodorizer. Biodegradable. USDA authorized Class C1.

## Bio-Enzymatic Deodorants

### Nature's Solution™

#### Bio-Enzymatic Deodorizer / Spotter / Digester (#1800, #1801)

Provides effective removal of organic stains and odors. Great for use in restrooms, locker rooms, carpet, upholstery, drains and grease traps. Powerful formula with over 100 billion active bacteria per gallon. Multi-functional product has a wide variety of uses. Contains our long lasting MCA™ malodor counteractant with Herve Outdoors™ fragrance. USDA authorized Class C1.

### Natural Miracle

#### Biologically Engineered

#### Instant Malodor Destroyer & Cleaner (#1820, #1821)

Advanced, synergized bio-enzymatic formulation to instantly control malodors and provide long lasting deodorization. Powerful formula with over 200 billion synergized bacteria. Multi-functional, used for controlling malodors, cleaning and stain removal. Rapid germination and bacteria growth. Contains our long lasting MCA™ malodor counteractant with Bajan™ fragrance.





### Bio-Enzymatic Care Solutions™

Our biologically engineered maintenance products are formulated with proprietary synergized multi-blend live bacteria strains to be effective for the following applications under varying conditions such as temperature, pH and aerobic and anaerobic oxygen levels.

### Bio-Enzymatic Products

#### Sha-Zyme™

##### Grease Attacking / Anti-Slip Deodorizing Bio-Cleaner (#1830)

A no-rinse daily cleaner and degreaser for use on porous hard surfaces such as concrete, quarry tile, grouted surfaces. Non-acid formula eliminates grease, grime, urine deposits and light mineral deposits. Deodorizes as it cleans.

#### Sha-Zyme™ DRC

##### Deodorizer/Restroom Cleaner/Urine Odor Eliminator (#1831)

A powerful, bio-enzymatic, no-rinse daily cleaner and deodorizer to remove restroom soils and completely eliminate urine deposits and odors. For use on any water washable surface, including porous hard surfaces such as ceramic tile, brick, concrete, quarry tile, any grouted floor surface, rubber matting and non-porous surfaces such as vinyl tile. Eliminates urine deposits and odors.

#### Nature's Solution™

##### Bio-Enzymatic Deodorizer / Spotter / Digester (#1800, #1801)

Provides effective removal of organic stains and odors. Great for use in restrooms, locker rooms, carpet, upholstery, drains and grease traps. Powerful formula with over 100 billion active bacteria per gallon. Multi-functional product has a wide variety of uses. Contains our long lasting MCA™ malodor counteractant with Herve Outdoors™ fragrance. USDA authorized Class C1.

#### Natural Miracle

##### Biologically Engineered Instant Malodor Destroyer & Cleaner (#1820, #1821)

Advanced, synergized bio-enzymatic formulation to instantly control malodors and provide long lasting deodorization. Powerful formula with over 200 billion synergized bacteria. Multi-functional, used for controlling malodors, cleaning and stain removal. Rapid germination and bacteria growth. Contains our long lasting MCA™ malodor counteractant with Bajant™ fragrance.

#### Nature's Force™

##### Biologically Engineered Drain Opener & Maintainer (#1810, #1811)

Exceptionally powerful formula blended with free enzymes and over 100 billion active bacteria opens slow drains without harmful acids or caustics. Multi-functional formula unclogs drains, maintains drains and controls odors. Biodegradable so it is environmentally safe to use. Contains no caustics, acids or solvents and is safe for personnel, pipes and fittings. Powerful Giane™ fragrance.

#### Nature's Power

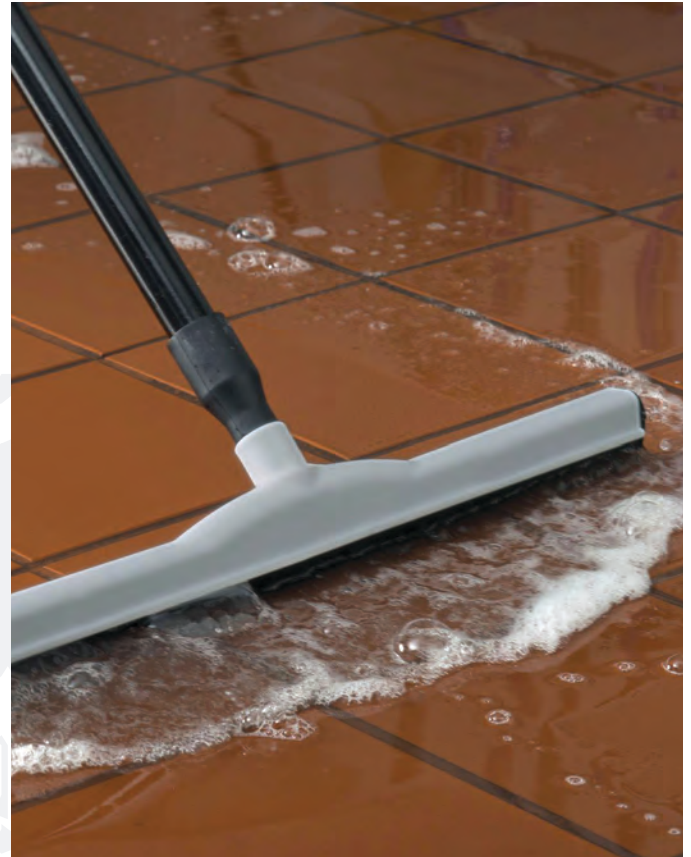
##### Biologically Engineered Instant Malodor Destroyer & Cleaner (#1825)

Keeps grease traps free of grease build-up with over 200 billion active bacteria per gallon. Reduces or eliminates manual cleaning cycles to save time and money. All natural ingredients are truly environmentally safe. Outstanding anaerobic (low oxygen environments) capabilities ensure degradation of complex waste materials.

### Natural Solutions™

#### Automatic Dispensing Pump for Drain Maintenance (#4203)

An automatic dispensing pump with a durable, corrosion resistant, lockable, molded cabinet. Timer is visible when cabinet is locked, and secure from unauthorized reprogramming. Timer is insulated from moisture and vapors, yet it is easy to monitor programming.





## Machine Dishwashing - High Temperature

### HTR-260 Concentrated High-Temp Rinse Additive (#1123)

A concentrated rinse additive that causes water to 'sheet off' dishes, glassware, etc. in machine dishwashing applications. Promotes rapid drying. Eliminates water spotting. Performs under a wide range of water hardness conditions. Use with all types of dispensing equipment.

## Machine Dishwashing - Low Temperature

### LTD-220 HD Multi-Temp Machine Detergent (#1121)

A non-chlorinated, non-foaming, highly concentrated warewashing detergent for use in both low and high temperature dish machines. Non-chlorinated. Non-foaming. Highly concentrated. Works in both low and high temperature dish machines. Alkaline formula tackles tough greasy soils.

### LTR-250 Premium Low Temperature Rinse Additive (#1122)

Low temperature rinse additive that causes water to 'sheet off' dishes, glassware, etc. in machine dish washing operations. Promotes rapid drying. Eliminates water spotting. Performs under a wide range of water hardness conditions. Use with all types of dispensing equipment.

## Specialty Warewashing Products

### CDL-520 Concentrated Delimer (#1126)

Dissolves lime deposits, scale, milk stone, films and light rust from stainless steel, aluminum, tile, porcelain, and other surfaces. Blend of organic and in-organic acids. Low odor, non fuming. Prevents corrosion. Dilute for manual cleaning. Full strength for fast de-liming of automatic dishmachines or C.I.P. equipment.

### FPS-510 Concentrated Liquid Flatware Presoak (#1125)

Specially formulated for presoaking and de-tarnishing of flatware. Performs equally well in hard and soft water. Reduces water spotting on flatware. Loosens cooked on soils.



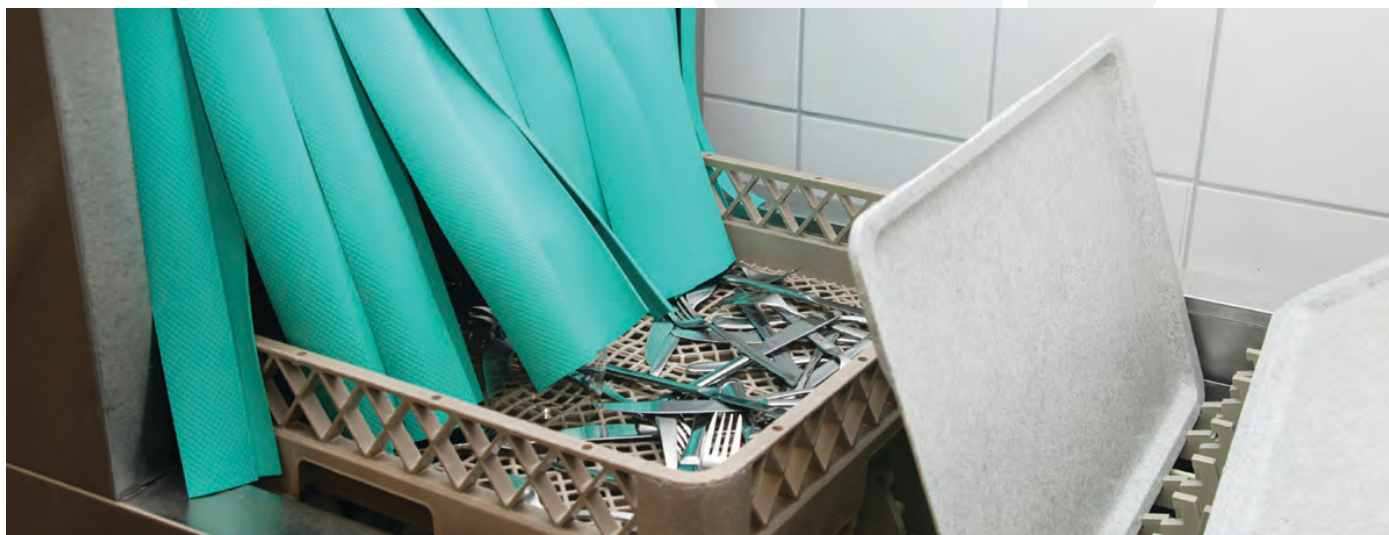
World Class Cleaning & Hygiene Solutions™



ProLEX™  
EXCELLENCE IN WAREWASH  
CLEANING TECHNOLOGY

Warewashing Systems

NCL®'s ProLEX™ Warewashing Program offers exceptional cleaning performance. This outstanding system of products provides sparkling dishes and flatware for hotels, resorts, restaurants and other facilities that demand nothing but the best. Whether you utilize high temperature or low temperature equipment, there is a ProLEX™ product that is right for your application.





World Class Cleaning & Hygiene Solutions™

## CleanSMART™ Equipment

### Food Service Solutions™

NCL® Food Service Solutions™ offer a broad line of cleaners, degreasers, sanitizers, and equipment designed to promote cleanliness and prevent food borne contamination. Products that are specifically designed for use in food industries such as meat and poultry processing, fresh fish counters, delicatessens, bakeries, refrigerated storage, food courts and check out counters.

#### CleanSMART™ Sink Dispensing Unit (#4118)

Dispenses both Detergent and Sanitizer at recommended dilution ratios. Flow rate of 4 G.P.M. High flow eductors provide accurate, rapid sink filling. Easily adapts to any two or three compartment sink. Ideal for supermarkets, restaurants and industrial kitchens.

#### CleanSMART™ Foam Dispensing Unit (#4119)

For use with CleanSMART™ food service products. Unique adjustable foaming/spray nozzle. Easy foaming / rinsing / sanitizing changeover. Convenient hose holder makes storage convenient.

## Food Service Equipment Accessories

#### Pak-SMART™ Connecting Cap (#6733)

Cap connects products packaged with a Pak-SMART™ Stem in each bottle to CleanSMART™ or UNI POWER™ equipment. Individually packaged.

#### Handi Rack Round Gallon (#4145)

Sturdy wire holding rack designed for containers. Dimensions: 6.5" diameter. Sturdy, rust resistant wire construction. Black. Complete with mounting hardware.

## CleanSMART™ Products

#### CleanSMART™ Pot N' Pan Detergent SC (#1115)

A high performance formula creates high stable foam for easy removal of grease and food stains. USDA authorized. Super concentrated formula. USDA authorized, Class A1. Easily removes grease and food stains. Packaged for use with CleanSMART™ Dispensing System.

#### CleanSMART™ Sanitizer (#1116)

Quaternary formula sanitizes pre-cleaned surfaces. For supermarkets, food service and meatroom applications. Super concentrated 1:512 dilution ratio. USDA authorized Class D2. Packaged for use with CleanSMART™ Dispensing System. Effective in hard water up to 400 ppm and 5% organic serum. EPA Registered.

#### CleanSMART™ Foaming Degreaser Cleaner (#1117)

Non-butyl foaming degreaser for meatroom area surfaces, floors and equipment. Super concentrated formula. USDA authorized Class A1. Exceptional degreasing performance. Packaged for use with CleanSMART™ Dispensing System.





## Sanitizers

### Saniquat™ Disinfectant Sanitizer Deodorizer (#0125)

Dilutes at 1:512 for sanitization; does not require a potable rinse. For use in food processing plants, supermarkets, restaurants and hospitals. Multi-purpose formulation gives a cost effective use in a wide range of procedures. High use dilution for economical sanitization. No rinse required at specified dilutions, saves labor. USDA authorized Class D2. EPA Registered.

### Spritz™ RTU Sanitizer (#0244)

A ready-to-use quaternary sanitizer that quickly and easily sanitizes and deodorizes hard, nonporous food contact surfaces in 60 seconds. Kills 99.999% of bacteria in 60 seconds. Simple and easy to use. No rinse required. Saves labor while providing complete sanitization. Odorless, does not contain unwanted perfumes or odors that could prove to be objectionable or irritating. EPA Registered.



## Dish Detergents

### Green Emerald Premium Dishwash Detergent (#1100)

A super viscous formula that creates long lasting suds and leaves even the greasiest dishes sparkling clean. Distinctively appealing fresh citrus fragrance. Unique combination detergent system provides high stable foam. Super concentrated to be economical. Mild pH is easy on the hands. Rinse additives promote drying without spotting. USDA authorized Class A1.

### Hurrah Premium Grade Lotonized Dishwash Concentrate (#1101)

High quality, high foaming pink lotonized. High stable foam promotes user appeal and long lasting cleaning. Highly concentrated provides extended use and cost effectiveness. Lotonized formula protects and softens skin. Pleasant color and fragrance ensures acceptance by all personnel. USDA authorized Class A1.

### Golden Pot N' Pan Dishwash Detergent (#1105)

A premium grade concentrated dishwash detergent. Lemon scented with golden amber color. Effortlessly cleans the greasiest dishes. Super concentrated formula for cost effectiveness. Long lasting foam stability and aggressive cleaning action. Pleasantly scented for acceptance by all personnel. Exotic wetting agents promote drying without spotting. USDA authorized Class A1.

## Foaming Degreasers

### Pooff™ Foaming Cleaner (#0920)

An extremely heavy-duty, highly concentrated foaming cleaner for fast and effective cleaning in food service applications. High foaming action provides the longest contact for complete cleaning. Rinses freely, no film residue for the cleanest surface possible, saves labor. Corrosion inhibited to protect equipment. USDA authorized Class A1.

## Food Service Cleaners

### Frost Free Freezer & Cold Room Cleaner (#1430)

Highly effective, ready-to-use floor, wall and equipment cleaner in all freezer, cold storage and other sub-freezer areas to -44°F. Resists freezing down to -44°F, can be used in all types of freezers. Neutral detergent base is environmentally responsible. Fast, efficient cleaning and costly shutdowns can be avoided. Low odor formula can be used in low ventilated areas. USDA authorized Class A5.

### Surge™ Heavy-Duty Liquid Drain Opener (#1760)

Non-acid drain opener that pours through standing water and goes directly to the clog. Removes scum, hair and grease. Non-fuming, can be used in any drain. Pour through standing water, no need to empty clogged drains. Safe to use, will not harm plumbing fixtures, garbage disposals, porcelain or septic tanks.

### Big Punch Instant Acting Oven & Grille Cleaner (#1104)

High caustic formulation liquefies cooked-on soils from ovens and grilles, warm or cold. Non-fuming, just apply and wipe soil away. Super active formula eliminates lengthy cleaning times. Free rinsing offers universal use by all food processing facilities. USDA authorized Class A8.

### Kitchen Mate Professional Oven & Grille Cleaner (#2005)

A commercial strength aerosol, high foaming formulation that eliminates the need for scraping and scouring of burnt on grease, grime and dirt. Thick clinging foam/gel applies uniformly and clings for maximum surface exposure. Works in warm or cold ovens. Fast acting formula penetrates quickly to minimize labor. USDA authorized Class A8.

### Glimmer™ Stainless Steel Polish / Cleaner (#2006)

3 in 1 Cleaner / Polish / Protectant aerosol for use on stainless steel, chrome, aluminum, any polished or brushed metal surface. Cleans, repairs and protects in one easy step to save time and labor. Thick spray clings to vertical surfaces for easy application. Streak free formula wipes easily. Retards fingerprinting and resoiling to prolong times between cleaning.





World Class Cleaning & Hygiene Solutions™

## World Class Cleaning Solutions™

NCL® aerosol products offer the maximum in performance and convenience. These aerosol products reduce costs by eliminating the need for diluting concentrates, applying ready-to-use solution right where you want it, no mess, no waste. Whatever your cleaning challenge, NCL® has aerosol products that are proven to meet your needs.

### Aerosol Products

#### **Kitchen Mate** Professional Oven & Grille Cleaner (#2005)

A commercial strength aerosol, high foaming formulation that eliminates the need for scraping and scouring of burnt on grease, grime and dirt. Thick clinging foam/gel applies uniformly and clings for maximum surface exposure. Works in warm or cold ovens. Fast acting formula penetrates quickly to minimize labor. USDA authorized Class A8.

#### **Citra Blast** Foaming All-Purpose Cleaner (#2001)

A heavy duty aerosol, foaming citrus spray n' wipe cleaner, spotter or degreaser for any water washable surface. User friendly formula contains no butyl or petroleum distillates. Multi-purpose for use as a cleaner, spotter and heavy duty degreaser. Thick foam clings to vertical surfaces for excellent cleaning power. Premium citrus solvents penetrate soils quickly.

#### **Sea Brite™** Glass and Surface Cleaner (#2002)

A multi-purpose aerosol glass and surface cleaner for many institutional, commercial and industrial cleaning environments. This professional formula is made with pure deionized water, fast evaporating degreasing solvents and anti-re-soiling agents for streak free soil removal. Unique clean & fresh fragrance and rich foam allow its use in many varied areas and conditions.

#### **Cream Coat™** Premium Furniture Polish (#2007)

Fortified with lemon oil, this premier aerosol furniture polish deep-cleans and protects fine wood, vinyl, metal, formica and more. Cleans, repairs and polishes in one easy step to save time and labor. Lemon oil protects wood surfaces and leaves the room smelling fresh. Retards fingerprinting and resoiling to prolong times between cleaning.

#### **Glimmer™** Stainless Steel Polish / Cleaner (#2006)

3 in 1 Cleaner / Polish / Protectant aerosol for use on stainless steel, chrome, aluminum, any polished or brushed metal surface. Cleans, repairs and protects in one easy step to save time and labor. Thick spray clings to vertical surfaces for easy application. Streak free formula wipes easily. Retards fingerprinting and resoiling to prolong times between cleaning. USDA authorized Class C1.

#### **Fortress** Spray Disinfectant Deodorant (#2004)

A hospital-grade broad-spectrum aerosol spray disinfectant and deodorant. Kills germs and eliminates malodors at their source. Fungicidal and Mildewicidal. Built-in odor counteractants destroy malodors at their source and exclusive cosmetic grade Puri™ perfume leaves behind a pleasant scent after each use. Effective against HIV-1 (AIDS virus). EPA Registered.

#### **Rely** Foaming Disinfectant Cleaner (#2003)

A hospital-grade foaming aerosol disinfectant that cleans, disinfects and deodorizes in one step. Excellent cleaner on a wide variety of soil types and safe for use on any water washable surface. Built-in odor counteractants eliminate foul odors. Cosmetic grade Puri™ perfume. Virucidal, Bacteriacidal, Fungicidal and Mildewicidal. Effective against the HIV-1 (AIDS virus) and Herpes Simplex 2 virus. EPA Registered.

#### **Pizzazz™** Soil and Floor Finish Build-up Remover (#2008)

Soil and floor finish build-up remover in a convenient aerosol form works great on baseboards, vertical surfaces, and as a spot stripper. Highly active, low odor formulation does not contain butyl or ammonia.

#### **Control** Dusting Cloth & Mop Treatment (#2013)

Water-based formula in a convenient aerosol to treat either a dust mop or a cleaning cloth. Control restores the natural shine to floors, furniture, and many other surfaces. Pleasant vanilla fragrance.

#### **Eternity™** Air Freshener & Malodor Destroyer (#2012)

A revolutionary aerosol air freshener & malodor counteractant used for controlling obnoxious odors. Utilizes proprietary MCA™ odor inhibitor to change the molecular structure of odor causing substances. Exclusive MODA™ Essence fragrance fills the area with a beautiful modern fresh scent. Controls odors for over 24 hours.





## Industrial Products

### Next Step™ Heavy-Duty Degreaser / Cleaner (#1025)

An exceptional power degreaser cleaner that can be used as a spray, in mop & bucket, pressure washer or autoscrubber. Powerful emulsifier therefore requires less mechanical agitation. Highly concentrated formula works well at high dilutions. Contains corrosion inhibitors so it is safe for use on non-ferrous metals.

### Astro-Chem™ Industrial Cleaner / Degreaser (#1020)

Superior formula specifically designed for emulsifying grease from industrial engines and equipment. Water-based formula, non-flammable. Non-Corrosive and safe for use on all ferrous and non-ferrous surfaces. Designed for hand and mechanical applications and high pressure washing. Free rinsing. USDA authorized Class A4, A8.

### Eco-Solv Non-Chlorinated / Non-CFC Safety Solvent (#1480)

An exceptional power degreaser cleaner that can be used as a spray, in mop & bucket, pressure washer or autoscrubber. Powerful emulsifier therefore requires less mechanical agitation. Highly concentrated formula works well at high dilutions. Contains corrosion inhibitors so it is safe for use on non-ferrous metals.

### Citrol™ 100% Active - All Natural Citrus Degreaser Deodorizer (#1080, #1079)

Made from pure citrus extracts to remove adhesives, rubber burn marks, tar, asphalt, chewing gum, inks and greases. Cleans without petroleum odors, leaves a pleasant citrus fragrance. Non-corrosive, safe for all metal surfaces including aluminum, brass, copper. Multi-purpose, use as a cleaner, degreaser and deodorizer. Biodegradable. USDA authorized Class C1.

### Power-Safe™ Multi-Surface Degreaser Cleaner (#1021)

Most powerful, high speed all-purpose cleaner. An ultra-safe, environmentally responsible, highly effective degreaser that can be used on all washable surfaces. Recommended for use on washable surfaces, paints, plastics, soft metals, hard metals, decorative metals, sealed wood and cork, stone, cement, all types of tiles, marble, porcelain, brick, glass, rubber, linoleum, no-wax floors. Dilute with hot or cold water for use. Use by mopping, wiping, spraying, brushing, soaking, foaming or other available methods.





## Automotive Products

### Nu-Hide

#### Plastic Polish (#1330, #1331)

Renovates plastic surfaces, as well as leather, vinyl, rubber, chrome, stainless steel and formica. Polishes, cleans, protects. Imparts a deep luster while protecting surfaces against drying, fading and cracking caused by sun, ozone and smog. Dissipates static charge to retard the attraction of dust and other airborne soils. Retards fingerprinting and resoiling to prolong times between cleaning. USDA authorized Class A7.

### Marvel

#### Brushless Pressure Washer Cleaner (#1460)

Non-acid cleaner that cleans, degreases and brightens in one step. For use on all water washable surfaces, including aluminum. Non-acid, non-butyl formula is safe to use with no harmful vapors or solvents. Ideal for prepaint cleaning. Brushless application, does not require agitation. Rinses freely to reduce labor intensive rinsing process. USDA authorized Class A1.

### Hurrah Car Wash

#### Concentrated Detergent (#1201)

High foaming, pH neutral detergent for automatic drive thru car wash facilities that lubricates brushes and is safe for all car finishes. Free rinsing formula dries without spotting eliminating toweling. Works well in hard water situations. Versatile formula can be used in manual, mechanical and pressure type applicators. Does not contain phosphates, completely biodegradable.

### Road Away

#### All Vehicle Wash Concentrate (#1220)

A professional transportation cleaner for all types of vehicles and trucks in all types of washing systems. Professional strength formula gives the maximum performance. Corrosion inhibited to protect metallic surfaces during cleaning. Will not harm paint so it is safe for multiple function cleaning. Can be used through a pressure washer, drive through wash or brush application.

## Uni-Power™ Dispensing Equipment

### Uni-Power™

#### Low Flow Single Button Dispenser (#4143)

An improved, economical way to dispense automatically diluted solutions into spray bottles, buckets or other containers at the touch of a button. Control dilution accurately for one product. Sturdy, high impact resistant plastic case. Low flow (1 gpm e-gap eductor)

### Uni-Power™

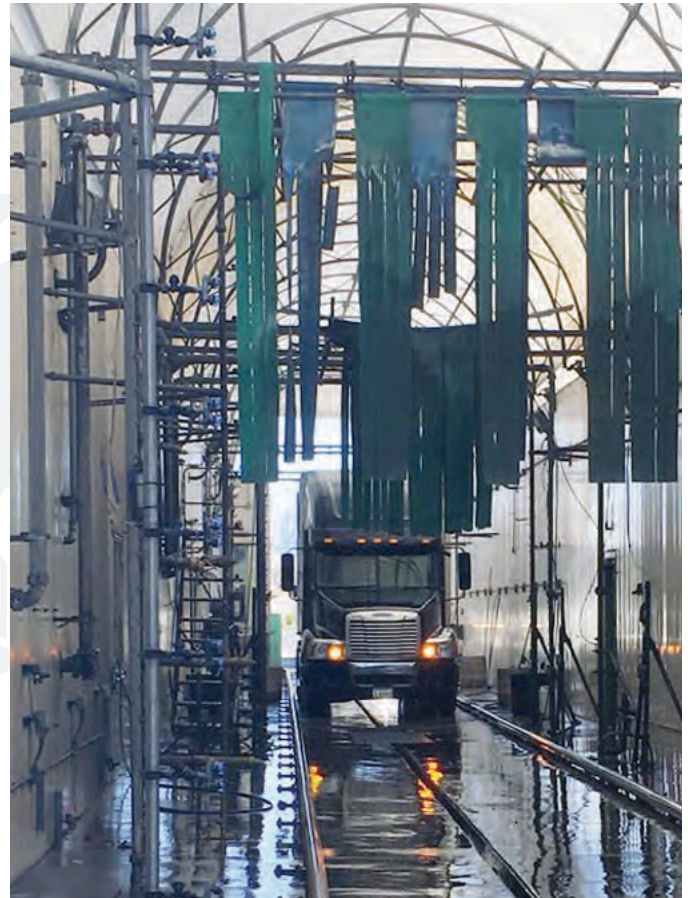
#### High Flow Single Button Dispenser (#4142)

An improved, economical way to dispense automatically diluted solutions into buckets, automatic scrubbers or other containers at the touch of a button. Control dilution accurately for one product. Sturdy, high impact resistant plastic case. High flow (4 gpm e-gap eductor)

### Handi Rack

#### Round Gallon (#4145)

Sturdy wire holding rack designed for round, 1 gallon containers. Dimensions: 6.5" diameter. Sturdy, rust resistant wire construction. Black. Complete with mounting hardware.





## PRODUCT INDEX - Alphabetical

|  |                    |  |  |
|--|--------------------|--|--|
| <b>- #s -</b>  |                    |  |  |
| 15% Coconut Oil Hand Soap .....  | 31                 |  |  |
| 20X.....   | 25                 |  |  |
| 24-7 Floor Finish .....  | 2                  |  |  |
| <b>- A -</b>   |                    |  |  |
| Affirm .....   | 31                 |  |  |
| afia™ ALCOHOL BASED Foaming<br>Hand Sanitizer .....  | 28                 |  |  |
| afia™ Alcohol-Free Foaming<br>Hand Sanitizer .....   | 28                 |  |  |
| afia™ Anti-Bacterial Foaming<br>Hand Cleaner .....   | 28                 |  |  |
| afia™ Dispenser Stand .....  | 29                 |  |  |
| afia™ Dispenser Touch Free White .....   | 29                 |  |  |
| afia™ Dispenser Manual Black .....   | 29                 |  |  |
| afia™ Dispenser Manual White .....   | 29                 |  |  |
| afia™ Drip Tray .....  | 29                 |  |  |
| afia™ Earth Sense Certified Green<br>Foaming Hand Cleaner .....                                  | 28                 |  |  |
| afia™ Earth Sense Lavender Morning<br>Foaming Hand Cleaner .....                                 | 28                 |  |  |
| afia™ Foaming E2 Sanitizing<br>Hand Cleaner .....  | 28                 |  |  |
| afia™ Foaming Hair & Dody Wash.....  | 28                 |  |  |
| afia™ Harvest Melon Foaming<br>Hand Cleaner .....  | 28                 |  |  |
| afia™ Hypoallergenic Certified<br>Foaming Hand Cleaner .....                                     | 28                 |  |  |
| afia™ Ocean Mist Foaming Hand Cleaner .....  | 28                 |  |  |
| afia™ Spring Blossom Premium<br>Foaming Hand Cleaner.....  | 28                 |  |  |
| All-In-One Carpet Cleaner .....  | 20                 |  |  |
| All-In-One RTU Carpet Cleaner .....  | 20                 |  |  |
| Aqua Magic Floor Pads .....  | 8                  |  |  |
| Aspire .....   | 2, 12              |  |  |
| Astro-Chem .....   | 23, 40             |  |  |
| Avistat-D .....  | 27                 |  |  |
| <b>- B -</b>   |                    |  |  |
| Bare Bones .....   | 3                  |  |  |
| Bare Bones Low Odor .....  | 3                  |  |  |
| Balance .....  | 2                  |  |  |
| Bathroom Plus .....  | 32                 |  |  |
| Big Punch .....  | 38                 |  |  |
| Bio-Kleen Plus .....   | 21                 |  |  |
| Bolt.....  | 3                  |  |  |
| Brite Eyes .....   | 2                  |  |  |
| Bullseye .....   | 23                 |  |  |
| Burst Plus .....   | 20                 |  |  |
| <b>- C -</b>   |                    |  |  |
| C-All .....  | 25                 |  |  |
| Chem-Eez .....   | 23                 |  |  |
| Citra Blast .....  | 24, 39             |  |  |
| Citrol .....   | 24, 34, 40         |  |  |
| Citrus Flower-Quat.....  | 26                 |  |  |
| Citrus-Kleen .....   | 23                 |  |  |
| CleanSMART™<br>Foam Dispensing Unit.....   | 37                 |  |  |
| Foaming Degreaser Cleaner SC.....  | 37                 |  |  |
| Pot N Pan Detergent SC .....   | 37                 |  |  |
| Sanitizer 1:512 .....  | 37                 |  |  |
| Sink Dispensing Unit.....  | 37                 |  |  |
| Combat .....   | 26                 |  |  |
| Command .....  | 21                 |  |  |
| Commercial Blazer.....   | 9                  |  |  |
| Commercial Blazer MP .....   | 9                  |  |  |
| Conkleen 204 .....   | 23                 |  |  |
| Control .....  | 5, 39              |  |  |
| Corral .....   | 33                 |  |  |
| Cream Coat .....   | 25, 39             |  |  |
| Cyclone .....  | 7                  |  |  |
| <b>- D -</b>   |                    |  |  |
| Decade .....   | 2                  |  |  |
| Defend .....   | 31                 |  |  |
| Deo Pine .....   | 24                 |  |  |
| Descum .....   | 24, 32             |  |  |
| Diamond Gloss .....  | 6                  |  |  |
| <b>- E -</b>   |                    |  |  |
| Earth Sense® Aspire.....   | 2, 12              |  |  |
| Earth Sense® Certified Green<br>Foaming HC .....   | 12, 30             |  |  |
| Earth Sense® Certified Green<br>Liquid HC .....  | 12                 |  |  |
| Earth Sense® Degreaser<br>Cleaner .....  | 11, 15, 17, 19, 23 |  |  |
| Earth Sense® Evergreen Finish.....   | 2, 12              |  |  |
| Earth Sense® Foam Safe<br>Hand Cleaner.....  | 12, 30             |  |  |
| Earth Sense® Glass &<br>Window Cleaner.....  | 15, 16, 18         |  |  |
| Earth Sense® HD Washroom<br>Cleaner .....  | 11, 33             |  |  |
| Earth Sense® Multi-Surface Cleaner with<br>H <sub>2</sub> O <sub>2</sub> Super Concentrate ..... | 11, 15, 16, 18, 25 |  |  |
| Earth Sense® Multi-Purpose<br>Neutral Cleaner .....  | 4, 11              |  |  |
| Earth Sense® Neutral<br>Disinfectant Detergent .....   | 11, 26             |  |  |
| Earth Sense® Neutral Floor Cleaner.....  | 4, 11              |  |  |
| Earth Sense® pH Neutral<br>All-Purpose Cleaner .....   | 15, 17, 18         |  |  |
| Earth Sense® RTU Glass &<br>Hard Surface Cleaner.....  | 11, 25             |  |  |
| Earth Sense® RTU Multi-Surface .....   | 11, 25             |  |  |
| Easy Dab .....   | 33                 |  |  |
| Eco-Solv .....   | 24, 40             |  |  |
| Econo-Diamonds .....   | 8                  |  |  |
| Edge Plus .....  | 20                 |  |  |
| Endure .....   | 20                 |  |  |
| Enhance .....  | 4                  |  |  |
| Enseel .....   | 2                  |  |  |
| Eternity (Aerosol) .....   | 34, 39             |  |  |
| Eternity (Liquid) .....  | 34                 |  |  |
| Evergreen Finish .....   | 2, 12              |  |  |
| Expose .....   | 3                  |  |  |
| Extreme Plus .....   | 21                 |  |  |
| <b>- F -</b>   |                    |  |  |
| Fast Break .....   | 10                 |  |  |
| Finish Prep Pad.....   | 10                 |  |  |
| Flexi-Clean .....  | 5                  |  |  |
| Flexi-Sheen .....  | 5                  |  |  |
| Floor Coater Refills.....  | 10                 |  |  |
| Foam-Break .....   | 21                 |  |  |
| Foam Magic Hand Cleaner Dispensers.....  | 31                 |  |  |
| Foam Safe™ Ocean Mist.....   | 30                 |  |  |
| Fortress .....   | 27, 39             |  |  |
| Fresh Start .....  | 34                 |  |  |
| Frost Free .....   | 38                 |  |  |
| <b>- G -</b>   |                    |  |  |
| Glimmer .....  | 25, 38, 39         |  |  |
| Golden Pot N' Pan .....  | 38                 |  |  |
| Granite Master Diamonds .....  | 8                  |  |  |
| Granite Star .....   | 6                  |  |  |
| Green Emerald .....  | 38                 |  |  |
| Green Impact .....   | 3, 12              |  |  |
| GymBuff .....  | 10                 |  |  |
| GymClean .....   | 10                 |  |  |
| GymPrep .....  | 10                 |  |  |
| GymShield .....  | 10                 |  |  |
| <b>- H -</b>   |                    |  |  |
| Handi-Rack (Round).....  | 37, 41             |  |  |
| Hombre .....   | 33                 |  |  |
| Hurrah Car Wash .....  | 41                 |  |  |
| Hurrah Dishwash .....  | 38                 |  |  |
| Hurricane .....  | 6                  |  |  |
| <b>- I -</b>   |                    |  |  |
| Image .....  | 4                  |  |  |
| Impressions .....  | 2                  |  |  |
| Incrediloso Herbal .....   | 4                  |  |  |
| Incrediloso Lavender .....   | 4                  |  |  |
| Invincible .....   | 2                  |  |  |
| <b>- K -</b>   |                    |  |  |
| Kitchen Mate .....   | 38, 39             |  |  |
| Kleer Brite .....  | 25                 |  |  |
| <b>- L -</b>   |                    |  |  |
| Lavender-Quat .....  | 26                 |  |  |
| Lemon-Quat .....   | 26                 |  |  |
| Luminaire Diamonds .....   | 8                  |  |  |
| LVT-Clean .....  | 5                  |  |  |
| LVT-Protect .....  | 5                  |  |  |
| <b>- M -</b>   |                    |  |  |
| Magic Breeze Herbal.....   | 34                 |  |  |
| Magic Breeze Lavender .....  | 34                 |  |  |
| MAIN SQUEEZE™<br>Earth Sense Degreaser Cleaner.....  | 22                 |  |  |
| Glass & Hard Surface Cleaner .....   | 22                 |  |  |
| pH Neutral All-Purpose Cleaner .....   | 22                 |  |  |
| Lavender 64 Neutral Disinfectant.....  | 22                 |  |  |
| Marvel .....   | 41                 |  |  |
| Matte.....   | 2                  |  |  |
| Micro-Chem Plus .....  | 26                 |  |  |
| Mint-Quat .....  | 26                 |  |  |
| Mirage .....   | 4                  |  |  |
| Mold Away .....  | 7                  |  |  |
| MRP .....  | 6                  |  |  |
| Multi-Stat .....   | 27                 |  |  |
| <b>- N -</b>   |                    |  |  |
| Natural Miracle .....  | 34, 25             |  |  |
| Natural Solutions Pump .....   | 35                 |  |  |
| Nature's Force .....   | 35                 |  |  |
| Nature's Power .....   | 35                 |  |  |
| Nature's Solution .....  | 34, 35             |  |  |
| Nat-Grit Brush .....   | 9                  |  |  |
| Nat-Speed Pad Driver .....   | 9                  |  |  |
| Nat-Splash Guard .....   | 9                  |  |  |
| Nat-Stone Driver .....   | 9                  |  |  |
| Nat-Weight Driver .....  | 9                  |  |  |
| NCL-2.....   | 6                  |  |  |
| NCLwipes™ Disinfectant Wipes .....   | 27                 |  |  |
| Neutra-Cide 256 .....  | 26                 |  |  |
| Neutral-Q .....  | 26                 |  |  |
| Next Step .....  | 23, 40             |  |  |
| No-Zap Floor Coating .....   | 5                  |  |  |
| Nu-Hide .....  | 21, 41             |  |  |
| Nu-Look .....  | 24                 |  |  |
| <b>- O -</b>   |                    |  |  |
| One Coat 25 .....  | 2                  |  |  |
| One .....  | 2                  |  |  |
| One Step .....   | 6                  |  |  |

## PRODUCT INDEX - Alphabetical

|  |                    |
|--|--------------------|
| <b>- P -</b>   |                    |
| Pak-SMART™ Cap .....   | 37                 |
| Patina .....   | 6                  |
| Perfection .....   | 2                  |
| pH-Enomenal .....  | 5                  |
| Picture Perfect .....  | 2                  |
| Pine-Quat-Plus .....   | 26                 |
| Pink Lotion .....  | 31                 |
| Pink N Creamy .....  | 31                 |
| Pizzazz .....  | 3, 39              |
| Pooff .....  | 24, 38             |
| Pop & Shine .....  | 4                  |
| Pop & Shine RTU.....   | 4                  |
| Porta Power Dispensing Unit .....                                    | 17                 |
| Power Polish.....  | 9                  |
| Power-Safe.....  | 23, 40             |
| Preparation Pad .....  | 10                 |
| Pro-Seel .....   | 2                  |
| Pro-Series Stone Blazer .....  | 9                  |
| ProLEX™ CDL-520 .....  | 36                 |
| ProLEX™ FPS-510 .....  | 36                 |
| ProLEX™ HTR-260 .....  | 36                 |
| ProLEX™ LTD-220 .....  | 36                 |
| ProLEX™ LTR-250 .....  | 36                 |
| <b>- Q -</b>   |                    |
| Qwik-Scrub .....   | 5                  |
| <b>- R -</b>   |                    |
| Ready...Set...CLEAN!   |                    |
| #1 Glass & Window Cleaner .....                                      | 18                 |
| #2 Multi-Surface Cleaner with H <sub>2</sub> O <sub>2</sub> .....    | 18                 |
| #4 pH Neutral All Purpose Cleaner .....                              | 18                 |
| #5 Degreaser Cleaner .....   | 19                 |
| #8 HD Detergent / Disinfectant .....                                 | 18                 |
| #9 Neutral Disinfectant Cleaner 256 .....                            | 18                 |
| #11 Sha-Zyme™ .....  | 19                 |
| #17 Incrediloso Lavender<br>Multi-Purpose Cleaner / Deodorizer ..... | 18                 |
| RSC Foaming Nozzle.....  | 19                 |
| RSC Portable Dispensing Unit.....                                    | 19                 |
| RSC Portable Dispensing System .....                                 | 19                 |
| Refillable Hand Soap Cartridges.....                                 | 31                 |
| Rely .....   | 27, 39             |
| Restore-It .....   | 6                  |
| Rinse Away Plus .....  | 21                 |
| Road Away .....  | 41                 |
| Rock Hard .....  | 6                  |
| Ruff N' Ready .....  | 24                 |
| <b>- S -</b>   |                    |
| Sand Screen Disk .....   | 10                 |
| Saniquat .....   | 38                 |
| Sea Brite .....  | 25, 39             |
| Sha-Zyme.....  | 13, 17, 19, 33, 35 |
| Sha-Zyme DRC .....   | 33,35              |
| Shield .....   | 6, 7               |
| Shield Plus .....  | 21                 |
| Soft N' Creamy .....   | 33                 |
| Soil Fighter Plus .....  | 20                 |
| Spit Shine .....   | 4                  |
| Spray Kleen Plus .....   | 20                 |
| Spritz.....  | 38                 |
| Stamina.....   | 2                  |
| Stone Beauty .....   | 7                  |
| Stone Blazer .....   | 9                  |
| Stone Blazer Commercial .....  | 9                  |
| Stone Blazer Pro Series.....   | 9                  |
| Stone Kleen .....  | 6                  |
| Sun Spray .....  | 24                 |
| Super Cherry .....   | 34                 |
| Super Nac.....   | 24                 |
| Super Purge .....  | 3                  |
| Super-Sonic .....  | 3                  |
| Surface Barrier .....  | 7                  |
| Surge .....  | 32, 38             |

|   |       |
|---|-------|
| <b>- T -</b>  |       |
| T-Bar Applicator .....  | 10    |
| T-Bar Applicator Refills .....  | 10    |
| Tannin Out .....  | 21    |
| Titan .....   | 24    |
| Total .....   | 32    |
| Treatco .....   | 5     |
| Trigger .....   | 32    |
| <b>TWIN POWER™</b>  |       |
| #1 Glass & Multi-Surface Cleaner .....  | 16    |
| #2 Heavy Duty Spray & Wipe Cleaner.....   | 17    |
| #3 Heavy Duty Non-Butyl Degreaser Cleaner .....                                 | 17    |
| #4 Deodorizing Neutral Cleaner.....   | 17    |
| #5 Non-Aid Bowl & Bathroom Cleaner .....  | 16    |
| #7 Healthcare Disinfectant Neutral Cleaner .....                                | 16    |
| #8 Odor Neutralizer.....  | 16    |
| #14 Bio-Enzymatic Deodorizer / Spotter / Digester.....                          | 16    |
| #15 Organic Acid HD Restroom Cleaner .....                                      | 16    |
| #16 pH Neutral All-Purpose Cleaner .....  | 17    |
| #17 HD Detergent / Disinfectant Cleaner.....                                    | 16    |
| #18 Earth Sense® Multi-Surface Cleaner with H <sub>2</sub> O <sub>2</sub> ..... | 16    |
| #19 Earth Sense® Glass & Window Cleaner .....                                   | 16    |
| #20 Washroom Cleaner .....  | 16    |
| #21 Earth Sense® Neutral Disinfectant Cleaner 256 .....                         | 16    |
| #22 Sha-Zyme™ .....   | 17    |
| #35 Earth Sense® Degreaser Cleaner .....  | 17    |
| Twin Power™ Handi Hold Rack .....   | 17    |
| Twin Power™ Dispensing Unit .....   | 17    |
| Twister .....   | 7     |
| <b>- U -</b>  |       |
| Ultramax .....  | 23    |
| Uni-Power™ Dispenser.....   | 41    |
| <b>- V -</b>  |       |
| Vigor .....   | 20    |
| Visions .....   | 2     |
| Vivid .....   | 4     |
| <b>- W -</b>  |       |
| WAC .....   | 5     |
| Wet Concrete Diamonds.....  | 8     |
| White Pearl .....   | 31    |
| Withstand .....   | 2     |
| World Class .....   | 2     |
| Wrangler .....  | 33    |
| <b>- Z -</b>  |       |
| ZooooM .....  | 3, 12 |

## USDA CLASSIFICATIONS

| Product Name                                | USDA Class Rating |
|---|-------------------|
| Astro-Chem.....                             | A4, A8            |
| Big Punch.....                              | A8                |
| Bullseye.....                               | A1                |
| C-All .....                                 | C1                |
| Chem-Eez.....                               | A1                |
| CleanSMART™ Pot N' Pan Det Deg .....        | A1                |
| CleanSMART™ Sanitizer 1:512.....            | D2                |
| CleanSMART™ Foaming Degreaser Cleaner ..... | A1                |
| Citra-Blast.....                            | C1                |
| Citrol.....                                 | C1                |
| Citrus-Kleen .....                          | C1                |
| Conkleen 204 .....                          | A4                |
| Deo Pine .....                              | C1                |
| Descum .....                                | A1                |
| Frost Free .....                            | A5                |
| Germi-Kleen .....                           | C1                |
| Glimmer.....                                | C1                |
| Golden Pot & Pan .....                      | A1                |
| Green Emerald .....                         | A1                |
| Hurrah Dishwash .....                       | A1                |
| Kitchen Mate.....                           | A8                |
| Kleer Brite .....                           | C1                |
| Lemon-Quat .....                            | A4, C1            |
| Marvel .....                                | A1                |
| Micro-Chem Plus .....                       | C1                |
| Mint-Quat.....                              | C1                |
| Mirage .....                                | A1                |
| Nature's Solution .....                     | C1                |
| Nu-Hide .....                               | A7                |
| Pink Lotion .....                           | E1                |
| Pooff .....                                 | A1                |
| Pro-Seel .....                              | P1                |
| Road Away .....                             | A4                |
| Ruff n' Ready .....                         | C1                |
| Saniquat.....                               | D2                |
| Sani-Turge.....                             | C1                |
| Sun Spray.....                              | C1                |
| Super Cherry.....                           | L1                |
| Super Nac.....                              | A1                |
| Ultramax.....                               | A4                |
| 15% Coconut Oil Hand Soap.....              | E1                |

For individual product package sizes available, refer to [www.nclonline.com](http://www.nclonline.com)



World Class Cleaning & Hygiene Solutions™



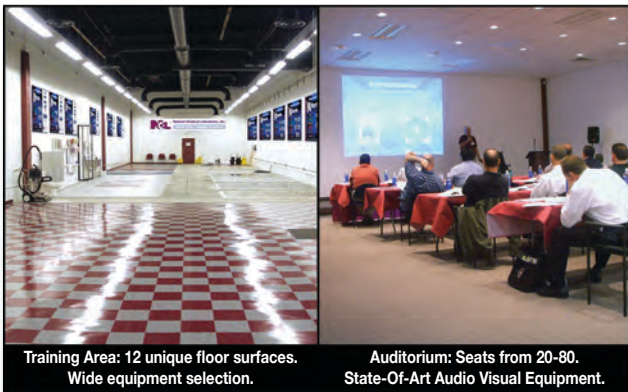


## VALUE ADDED SERVICES

At National Chemical Laboratories we are re-inventing the delivery of product related information and the training experience for companies and workers using chemical cleaning products. In order to enhance customer development and offer optimum product education solutions, NCL offers a variety of intensive training programs available in our dedicated training facility and through online video training modules.

### Onsite

NCL utilizes our 8,000 square foot Training Center, located in Philadelphia, PA. This magnificent center features two separate function areas; a seminar amphitheater that is equipped with “state-of-the-art” audio/ visual and lighting equipment, and the “Surface Application Center” is dedicated to “hands-on” training of both distributors and end-user personnel.



Training Area: 12 unique floor surfaces. Wide equipment selection.

Auditorium: Seats from 20-80. State-Of-Art Audio Visual Equipment.

### Online

Web-based technology has dramatically improved our ability to provide timely, on-the-spot, information and training.

#### Employee Training and Certification Program

For companies looking to accomplish a higher level of training, certification and documentation for their employees NCL University Online offers a complete online training solution.

- Online training, easy to use, available any time.
- Training setup individualized for each customer.
- Industry based performance certification.
- Printed certificates of completion.
- CMI approved training program.



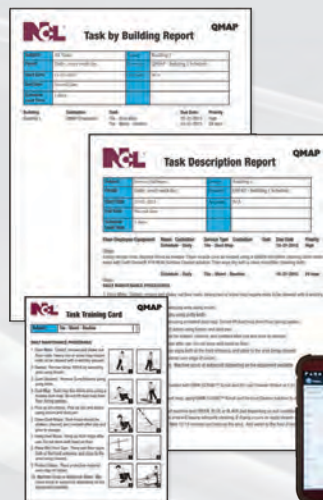
NCL® Self-Advancement VCT Floor Care Program has been verified to the ISSA Training Standard through Cleaning Management Institute (CMI). CMI and the ISSA Training Standard are premier in the cleaning industry, giving you the right credentials to achieve the recognition you deserve.



On The Mark™ is an innovative program that combines Products, Procedures and Processes into a single Healthy Green Cleaning Program for Schools, Building Service Contractors and other end-user clients. On The Mark™ is a Quality Management Assurance Program (QMAP)

that dramatically simplifies management activities. It changes the game from gathering data, to analyzing data and improving performance. On The Mark™ is an easy to use web-based software program with access available through computer, tablet, phone or any web connected device.

- Inspections are quick and easy to perform and record.
- Automatic Work Orders created for failing inspections.
- Convenient, Informative Management Reports with customized reporting available.
- Personnel Tracking for training, job performance.
- Training Documentation that is handy, and easy to use.



Access available through computer, tablet, phone, any web connected device.







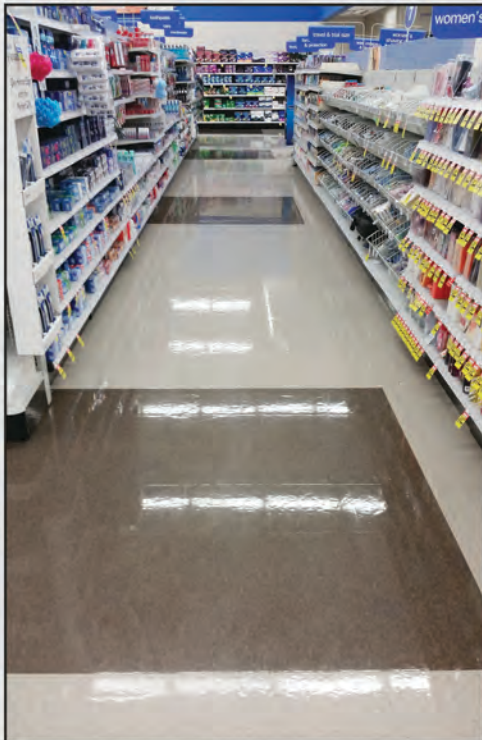
**World Class Cleaning & Hygiene Solutions™**



# Coast to Coast

**Sales • Service • Support**

NCL's team of direct sales specialists are dedicated to serving both our Distribution partners and End-User Customers from Coast to Coast and throughout the United States. These knowledgeable and highly trained group of seasoned veterans bring a wealth of experience to directly answer your specific questions with a friendly and prompt response. They are available to explain uses and specifications for our World Class Cleaning Solutions®, as well as to conduct on-site training as needed.



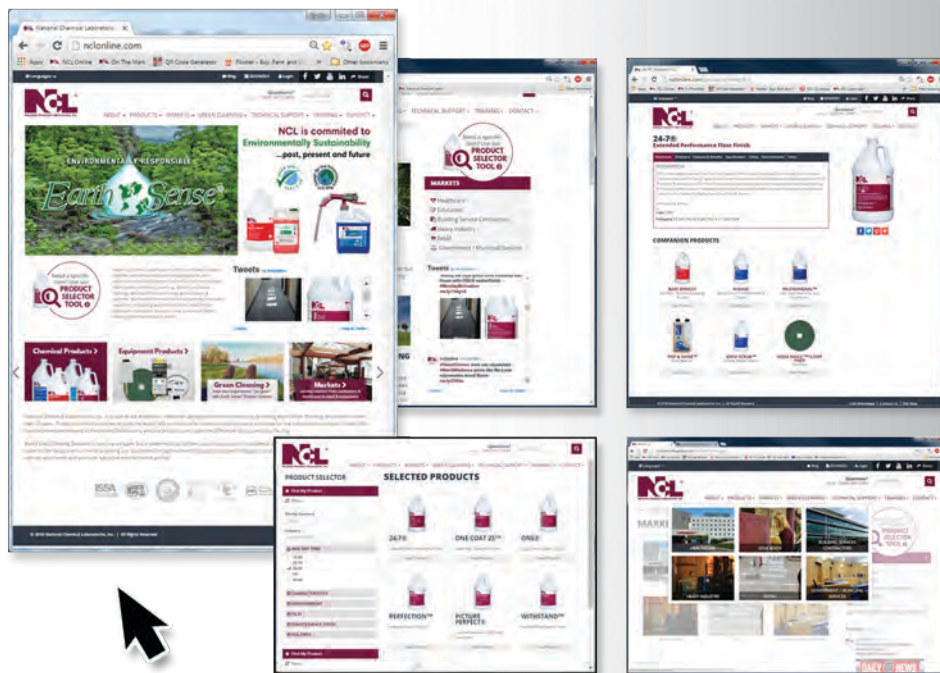
**We are driven to exceed your expectations!**







**World Class Cleaning & Hygiene Solutions™**



*Visit our updated website at [www.nclonline.com](http://www.nclonline.com)*

For complete product information, documentation,  
procedures training, company information and much more!